

Datasheet for ABIN545207
anti-GGA1 antibody (N-Term)[2 Images](#)[1 Publication](#)[Go to Product page](#)

Overview

Quantity:	400 µL
Target:	GGA1
Binding Specificity:	N-Term
Reactivity:	Human, Mouse
Host:	Rabbit
Clonality:	Polyclonal
Conjugate:	This GGA1 antibody is un-conjugated
Application:	Western Blotting (WB), ELISA, Immunofluorescence (IF)

Product Details

Purpose:	Rabbit polyclonal antibody raised against synthetic peptide of GGA1.
Immunogen:	A synthetic peptide (conjugated with KLH) corresponding to N-terminus of human GGA1.
Cross-Reactivity:	Human, Mouse

Target Details

Target:	GGA1
Alternative Name:	GGA1 (GGA1 Products)
Gene ID:	26088

Application Details

Application Notes:	ELISA (1:1000) Western Blot (1:100-500) The optimal working dilution should be determined by the end user.
--------------------	--

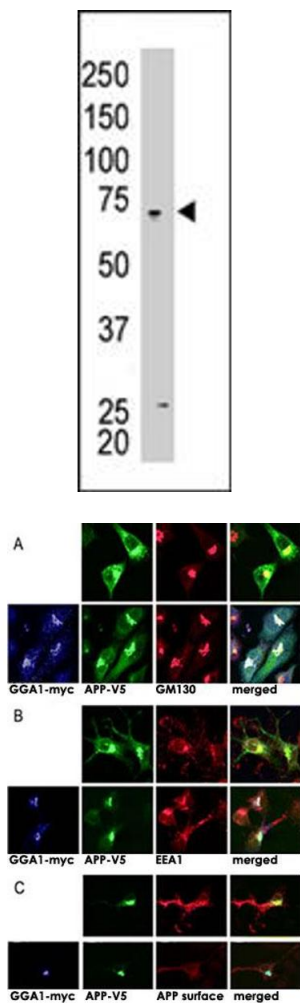
Restrictions:	For Research Use only
---------------	-----------------------

Handling

Format:	Liquid
Buffer:	In PBS (0.09 % sodium azide)
Preservative:	Sodium azide
Precaution of Use:	This product contains Sodium azide: a POISONOUS AND HAZARDOUS SUBSTANCE which should be handled by trained staff only.
Storage:	4 °C,-20 °C
Storage Comment:	Store at 4°C. For long term storage store at -20°C. Aliquot to avoid repeated freezing and thawing.

Publications

Product cited in:	von Arnim, Spoelgen, Peltan, Deng, Courchesne, Koker, Matsui, Kowa, Lichtenthaler, Irizarry, Hyman: "GGA1 acts as a spatial switch altering amyloid precursor protein trafficking and processing." in: The Journal of neuroscience : the official journal of the Society for Neuroscience , Vol. 26, Issue 39, pp. 9913-22, (2006) (PubMed).
-------------------	---



Western Blotting

Image 1. The GGA1 polyclonal antibody is used in Western blot to detect GGA1 in Jurkat cell lysate .

Image 2. A : N2a cells cotransfected with APP770-V5 and GGA1-myc or empty vector were immunostained for APP (Alexa488; green), GGA1 (Cy5; blue), and the Golgi marker GM130 (Cy3; red). B : The same transfection was stained for the endosomal marker EEA1 (Cy3). C : To assess cell-surface localization, APP695-GFP and GGA1-myc or empty vector were cotransfected and then immunostained with an Ab to the APP ectodomain on ice without permeabilization (Cy3). Cells were then fixed, permeabilized, and stained for GGA1 (Cy5). (J. Neurosci. 2006 Sep 27;26(39):9913-9922)