

Datasheet for ABIN545228
anti-GCNT1 antibody (C-Term)[Go to Product page](#)

2 Images

Overview

Quantity:	400 µL
Target:	GCNT1
Binding Specificity:	C-Term
Reactivity:	Human
Host:	Rabbit
Clonality:	Polyclonal
Conjugate:	This GCNT1 antibody is un-conjugated
Application:	Western Blotting (WB), ELISA, Immunohistochemistry (Paraffin-embedded Sections) (IHC (p))

Product Details

Purpose:	Rabbit polyclonal antibody raised against synthetic peptide of GCNT1.
Immunogen:	A synthetic peptide (conjugated with KLH) corresponding to C-terminus of human GCNT1.
Cross-Reactivity:	Human

Target Details

Target:	GCNT1
Alternative Name:	GCNT1 / NACGT2 (GCNT1 Products)
Gene ID:	2650

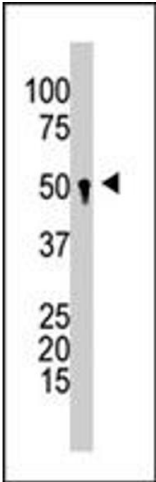
Application Details

Application Notes:	ELISA (1:1000) Western Blot (1:100-500) Immunohistochemistry (1:50-100) The optimal working dilution should be determined by the end user.
Restrictions:	For Research Use only

Handling

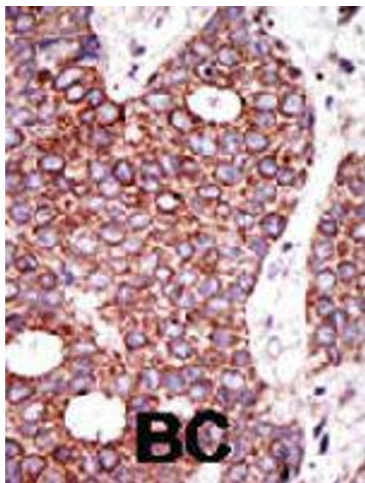
Format:	Liquid
Buffer:	In PBS (0.09 % sodium azide)
Preservative:	Sodium azide
Precaution of Use:	This product contains Sodium azide: a POISONOUS AND HAZARDOUS SUBSTANCE which should be handled by trained staff only.
Storage:	4 °C, -20 °C
Storage Comment:	Store at 4°C. For long term storage store at -20°C. Aliquot to avoid repeated freezing and thawing.

Images



Western Blotting

Image 1. Western blot analysis of GCNT1 polyclonal antibody in CEM cell line lysates (35 ug/lane). GCNT1 (arrow) was detected using the purified GCNT1 polyclonal antibody .



Immunohistochemistry

Image 2. Formalin-fixed and paraffin-embedded human cancer tissue reacted with GCNT1 polyclonal antibody , which was peroxidase-conjugated to the secondary antibody, followed by DAB staining . This data demonstrates the use of this antibody for immunohistochemistry; clinical relevance has not been evaluated . BC = breast carcinoma .