

Datasheet for ABIN545236  
**anti-RPN1 antibody (C-Term)**[Go to Product page](#)

1 Image

1 Publication

## Overview

Quantity:	400 µL
Target:	RPN1
Binding Specificity:	C-Term
Reactivity:	Human, Mouse
Host:	Rabbit
Clonality:	Polyclonal
Conjugate:	This RPN1 antibody is un-conjugated
Application:	Western Blotting (WB), ELISA

## Product Details

Purpose:	Rabbit polyclonal antibody raised against synthetic peptide of RPN1.
Immunogen:	A synthetic peptide (conjugated with KLH) corresponding to C-terminus of human RPN1.
Cross-Reactivity:	Human, Mouse

## Target Details

Target:	RPN1
Alternative Name:	Ribophorin-1 / RPN1 ( <a href="#">RPN1 Products</a> )
Gene ID:	6184

## Application Details

Application Notes:	ELISA (1:1000) Western Blot (1:100-500) The optimal working dilution should be determined by the end user.
--------------------	--

Restrictions:	For Research Use only
---------------	-----------------------

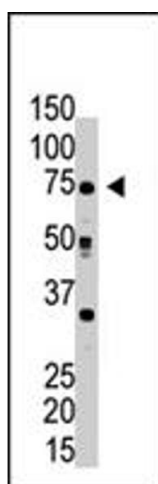
## Handling

Format:	Liquid
Buffer:	In PBS (0.09 % sodium azide)
Preservative:	Sodium azide
Precaution of Use:	This product contains Sodium azide: a POISONOUS AND HAZARDOUS SUBSTANCE which should be handled by trained staff only.
Storage:	4 °C,-20 °C
Storage Comment:	Store at 4°C. For long term storage store at -20°C. Aliquot to avoid repeated freezing and thawing.

## Publications

Product cited in:	Fu, Kreibich: "Retention of subunits of the oligosaccharyltransferase complex in the endoplasmic reticulum." in: <b>The Journal of biological chemistry</b> , Vol. 275, Issue 6, pp. 3984-90, (2000) ( <a href="#">PubMed</a> ).
-------------------	--

## Images



### Western Blotting

**Image 1.** The RPN1 polyclonal antibody is used in Western blot to detect RPN1 in HeLa cell lysate .