

Datasheet for ABIN545263  
**anti-Caprin-1 antibody (AA 625-654)**[Go to Product page](#)

## 2 Images

## Overview

|                      |   |
|----------------------|---|
| Quantity:            | 400 µL  |
| Target:              | Caprin-1  |
| Binding Specificity: | AA 625-654  |
| Reactivity:          | Human   |
| Host:                | Rabbit  |
| Clonality:           | Polyclonal  |
| Conjugate:           | This Caprin-1 antibody is un-conjugated   |
| Application:         | ELISA, Western Blotting (WB), Immunohistochemistry (Paraffin-embedded Sections) (IHC (p)) |

## Product Details

|                   |  |
|-------------------|--|
| Purpose:          | Rabbit polyclonal antibody raised against synthetic peptide of CAPRIN1.  |
| Immunogen:        | A synthetic peptide (conjugated with KLH) corresponding to amino acids 625-654 at C-terminus of human CAPRIN1. |
| Cross-Reactivity: | Human  |

## Target Details

|                   |  |
|-------------------|--|
| Target:           | Caprin-1                                       |
| Alternative Name: | Caprin-1 ( <a href="#">Caprin-1 Products</a> ) |
| Gene ID:          | 4076   |

## Application Details

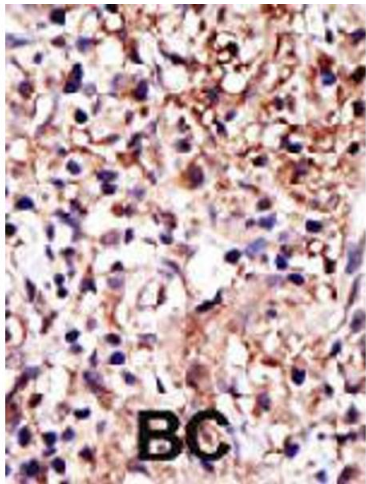
|                    |   |
|--------------------|---|
| Application Notes: | ELISA (1:1000)<br>Western Blot (1:100-500)<br>Immunohistochemistry (1:50-100)<br>The optimal working dilution should be determined by the end user. |
|--------------------|---|

|               |                       |
|---------------|-----------------------|
| Restrictions: | For Research Use only |
|---------------|-----------------------|

## Handling

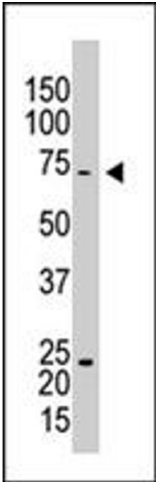
|                    |  |
|--------------------|--|
| Format:            | Liquid   |
| Buffer:            | In PBS (0.09 % sodium azide)   |
| Preservative:      | Sodium azide   |
| Precaution of Use: | This product contains Sodium azide: a POISONOUS AND HAZARDOUS SUBSTANCE which should be handled by trained staff only. |
| Storage:           | 4 °C,-20 °C  |
| Storage Comment:   | Store at 4°C. For long term storage store at -20°C.<br>Aliquot to avoid repeated freezing and thawing.                 |

## Images



Immunohistochemistry

**Image 1.** Formalin-fixed and paraffin-embedded human cancer tissue reacted with CAPRIN1 polyclonal antibody , which was peroxidase-conjugated to the secondary antibody, followed by DAB staining . This data demonstrates the use of this antibody for immunohistochemistry; clinical relevance has not been evaluated . BC = breast carcinoma .



Western Blotting

**Image 2.** The CAPRIN1 polyclonal antibody is used in Western blot to detect CAPRIN1 in HL-60 cell lysate .