

Datasheet for ABIN545294  
**anti-CPT1A antibody (C-Term)**[2 Images](#)[2 Publications](#)[Go to Product page](#)

## Overview

Quantity:	400 µL
Target:	CPT1A
Binding Specificity:	C-Term
Reactivity:	Human, Cow
Host:	Rabbit
Clonality:	Polyclonal
Conjugate:	This CPT1A antibody is un-conjugated
Application:	Western Blotting (WB), ELISA, Immunohistochemistry (Paraffin-embedded Sections) (IHC (p))

## Product Details

Purpose:	Rabbit polyclonal antibody raised against synthetic peptide of CPT1A.
Immunogen:	A synthetic peptide (conjugated with KLH) corresponding to C-terminus of human CPT1A.
Cross-Reactivity:	Cow, Human

## Target Details

Target:	CPT1A
Alternative Name:	CPT1A / CPT1-L ( <a href="#">CPT1A Products</a> )
Gene ID:	1374
Pathways:	<a href="#">AMPK Signaling</a> , <a href="#">Regulation of Lipid Metabolism by PPARalpha</a> , <a href="#">Feeding Behaviour</a> , <a href="#">Monocarboxylic Acid Catabolic Process</a>

## Application Details

Application Notes:	ELISA (1:1000) Western Blot (1:100-500) Immunohistochemistry (1:50-100) The optimal working dilution should be determined by the end user.
--------------------	---

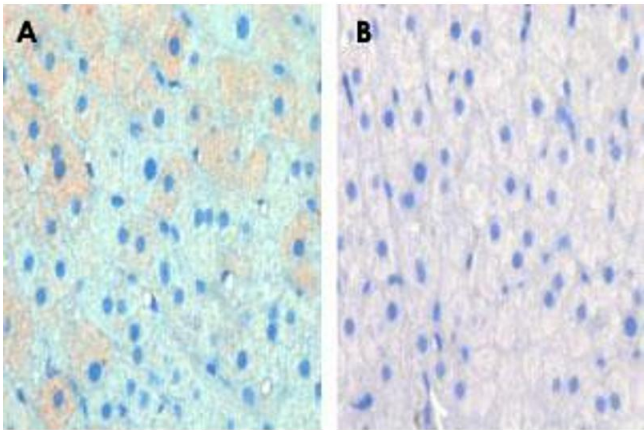
Restrictions:	For Research Use only
---------------	-----------------------

## Handling

Format:	Liquid
Buffer:	In PBS (0.09 % sodium azide)
Preservative:	Sodium azide
Precaution of Use:	This product contains Sodium azide: a POISONOUS AND HAZARDOUS SUBSTANCE which should be handled by trained staff only.
Storage:	4 °C, -20 °C
Storage Comment:	Store at 4°C. For long term storage store at -20°C. Aliquot to avoid repeated freezing and thawing.

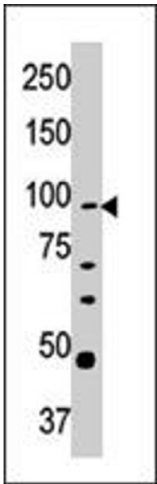
## Publications

Product cited in:	Rasmussen, Holmbäck, Volpi, Morio-Liondore, Paddon-Jones, Wolfe: "Malonyl coenzyme A and the regulation of functional carnitine palmitoyltransferase-1 activity and fat oxidation in human skeletal muscle." in: <b>The Journal of clinical investigation</b> , Vol. 110, Issue 11, pp. 1687-93, (2002 ) ( <a href="#">PubMed</a> ).
	Ogawa, Kanazawa, Yamamoto, Ohtsuka, Ogawa, Ohtake, Takayanagi, Kohno: "Expression analysis of two mutations in carnitine palmitoyltransferase 1A deficiency." in: <b>Journal of human genetics</b> , Vol. 47, Issue 7, pp. 342-7, (2002) ( <a href="#">PubMed</a> ).



Immunohistochemistry

**Image 1.** Formalin-fixed and paraffin-embedded cow lactatingreacted with CPT1A polyclonal antibody , which was peroxidase-conjugated to the secondary antibody, followed by AEC staining. This data demonstrates the use of this antibody for immunohistochemistry; clinical relevance has not been evaluated.



Western Blotting

**Image 2.** Western blot analysis of CPT1A polyclonal antibody in Y-79 cell line lysate (35 ug/lane). CPT1A (arrow) was detected using the purified CPT1A polyclonal antibody .