

Datasheet for ABIN545299

**anti-CPT1B antibody (C-Term)****2** Images**3** Publications[Go to Product page](#)

## Overview

Quantity:	400 µL
Target:	CPT1B
Binding Specificity:	C-Term
Reactivity:	Human
Host:	Rabbit
Clonality:	Polyclonal
Conjugate:	This CPT1B antibody is un-conjugated
Application:	Western Blotting (WB), ELISA, Immunohistochemistry (Paraffin-embedded Sections) (IHC (p))

## Product Details

Purpose:	Rabbit polyclonal antibody raised against synthetic peptide of CPT1B.
Immunogen:	A synthetic peptide (conjugated with KLH) corresponding to C-terminus of human CPT1B.
Cross-Reactivity:	Human

## Target Details

Target:	CPT1B
Alternative Name:	CPT1B / CPT1-M ( <a href="#">CPT1B Products</a> )
Gene ID:	1375
Pathways:	<a href="#">AMPK Signaling</a> , <a href="#">Monocarboxylic Acid Catabolic Process</a>

## Application Details

Application Notes:	ELISA (1:1000) Western Blot (1:50-200) Immunohistochemistry (1:50-100) The optimal working dilution should be determined by the end user.
--------------------	--

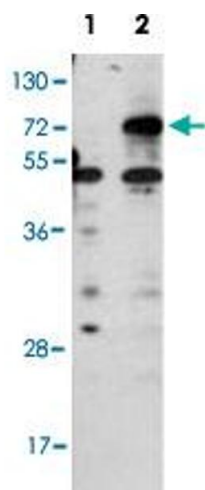
Restrictions:	For Research Use only
---------------	-----------------------

## Handling

Format:	Liquid
Buffer:	In PBS (0.09 % sodium azide)
Preservative:	Sodium azide
Precaution of Use:	This product contains Sodium azide: a POISONOUS AND HAZARDOUS SUBSTANCE which should be handled by trained staff only.
Storage:	4 °C, -20 °C
Storage Comment:	Store at 4°C. For long term storage store at -20°C. Aliquot to avoid repeated freezing and thawing.

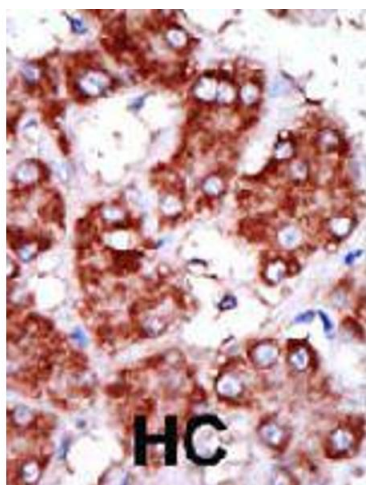
## Publications

Product cited in:	<p>Dai, Zhu, Woldegiorgis: "Leucine-764 near the extreme C-terminal end of carnitine palmitoyltransferase I is important for activity." in: <b>Biochemical and biophysical research communications</b>, Vol. 301, Issue 3, pp. 758-63, (2003) (<a href="#">PubMed</a>).</p> <p>van der Leij, Cox, Jackson, Huijkman, Bartelds, Kuipers, Dijkhuizen, Terpstra, Wood, Zammit, Price: "Structural and functional genomics of the CPT1B gene for muscle-type carnitine palmitoyltransferase I in mammals." in: <b>The Journal of biological chemistry</b>, Vol. 277, Issue 30, pp. 26994-7005, (2002) (<a href="#">PubMed</a>).</p> <p>Hirosawa, Nagase, Murahashi, Kikuno, Ohara: "Identification of novel transcribed sequences on human chromosome 22 by expressed sequence tag mapping." in: <b>DNA research : an international journal for rapid publication of reports on genes and genomes</b>, Vol. 8, Issue 1, pp. 1-9, (2001) (<a href="#">PubMed</a>).</p>
-------------------	---



#### Western Blotting

**Image 1.** Western blot analysis of CPT1B (arrow) using rabbit CPT1B polyclonal antibody . 293 cell lysates (2 ug/lane) either nontransfected (Lane 1) or transiently transfected with the CPT1B gene (Lane 2).



#### Immunohistochemistry

**Image 2.** Formalin-fixed and paraffin-embedded human hepatocellular carcinoma tissue reacted with CPT1B polyclonal antibody , which was peroxidase-conjugated to the secondary antibody, followed by DAB staining . This data demonstrates the use of this antibody for immunohistochemistry; clinical relevance has not been evaluated . HC = hepatocarcinoma .