

Datasheet for ABIN545361

anti-Glypican 3 antibody (AA 530-560)

3 Images

3 Publications

[Go to Product page](#)

Overview

Quantity:	400 µL
Target:	Glypican 3 (GPC3)
Binding Specificity:	AA 530-560
Reactivity:	Human, Mouse
Host:	Rabbit
Clonality:	Polyclonal
Conjugate:	This Glypican 3 antibody is un-conjugated
Application:	Immunofluorescence (IF), Western Blotting (WB), ELISA

Product Details

Purpose:	Rabbit polyclonal antibody raised against synthetic peptide of GPC3.
Immunogen:	A synthetic peptide (conjugated with KLH) corresponding to amino acids 530-560 at C-terminus of human GPC3.
Cross-Reactivity:	Human, Mouse

Target Details

Target:	Glypican 3 (GPC3)
Alternative Name:	Glypican-3 / GPC3 (GPC3 Products)
Gene ID:	2719
Pathways:	Glycosaminoglycan Metabolic Process

Application Details

Application Notes:	ELISA (1:1000) Western Blot (1:50-100) The optimal working dilution should be determined by the end user.
--------------------	---

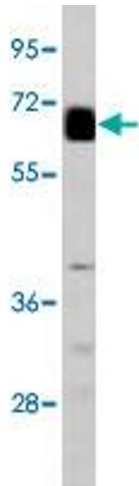
Restrictions:	For Research Use only
---------------	-----------------------

Handling

Format:	Liquid
Buffer:	In PBS (0.09 % sodium azide)
Preservative:	Sodium azide
Precaution of Use:	This product contains Sodium azide: a POISONOUS AND HAZARDOUS SUBSTANCE which should be handled by trained staff only.
Storage:	4 °C,-20 °C
Storage Comment:	Store at 4°C. For long term storage store at -20°C. Aliquot to avoid repeated freezing and thawing.

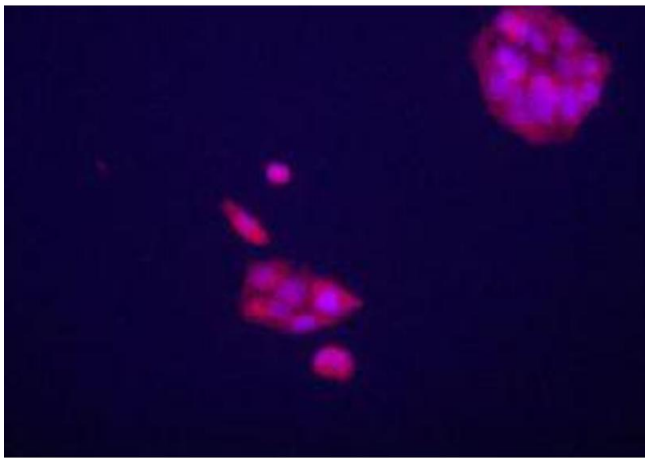
Publications

Product cited in:	Wichert, Stege, Midorikawa, Holm, Lage: "Glypican-3 is involved in cellular protection against mitoxantrone in gastric carcinoma cells." in: Oncogene , Vol. 23, Issue 4, pp. 945-55, (2004) (PubMed).
	Boily, Saikali, Sinnett: "Methylation analysis of the glypican 3 gene in embryonal tumours." in: British journal of cancer , Vol. 90, Issue 8, pp. 1606-11, (2004) (PubMed).
	Nakatsura, Kageshita, Ito, Wakamatsu, Monji, Ikuta, Senju, Ono, Nishimura: "Identification of glypican-3 as a novel tumor marker for melanoma." in: Clinical cancer research : an official journal of the American Association for Cancer Research , Vol. 10, Issue 19, pp. 6612-21, (2004) (PubMed).



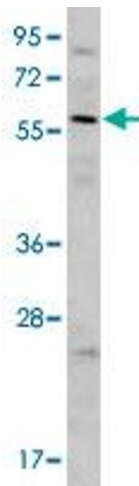
Western Blotting

Image 1. Western blot analysis of GPC3 polyclonal antibody in mouse lung tissue.



Immunofluorescence

Image 2. Immunofluorescence staining of GPC3 polyclonal antibody on HepG2 cells . The cells were acetone fixated . Antibody dilution of 1 : 50 . Original magnification 1 : 400 . Data and protocol courtesy of Dr . Mariana Dabeva, Department of Medicine at Albert Einstein College of Medicine .



Western Blotting

Image 3. Western blot analysis of Jurkat cell lysate (35 ug/lane) with GPC3 polyclonal antibody .