

Datasheet for ABIN545394

anti-Glypican 6 antibody (AA 24-46)**1** Image[Go to Product page](#)

Overview

Quantity:	400 µL
Target:	Glypican 6 (GPC6)
Binding Specificity:	AA 24-46
Reactivity:	Human
Host:	Rabbit
Clonality:	Polyclonal
Conjugate:	This Glypican 6 antibody is un-conjugated
Application:	ELISA, Western Blotting (WB)

Product Details

Purpose:	Rabbit polyclonal antibody raised against synthetic peptide of GPC6.
Immunogen:	A synthetic peptide (conjugated with KLH) corresponding to amino acids 24-46 at N-terminus of human GPC6.
Cross-Reactivity:	Human

Target Details

Target:	Glypican 6 (GPC6)
Alternative Name:	Glypican-6 / GPC6 (GPC6 Products)
Gene ID:	10082
Pathways:	Glycosaminoglycan Metabolic Process

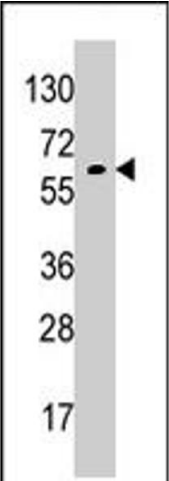
Application Details

Application Notes:	ELISA Western Blot (1:1000) The optimal working dilution should be determined by the end user.
Restrictions:	For Research Use only

Handling

Format:	Liquid
Buffer:	In PBS (0.09 % sodium azide).
Preservative:	Sodium azide
Precaution of Use:	This product contains Sodium azide: a POISONOUS AND HAZARDOUS SUBSTANCE which should be handled by trained staff only.
Storage:	4 °C,-20 °C
Storage Comment:	Store at 4°C for up to 2 weeks. For long term storage store at -20°C. Aliquot to avoid repeated freezing and thawing.

Images



Western Blotting

Image 1. Western blot analysis of GPC6 polyclonal antibody in K-562 cell line lysates (35 ug/lane). GPC6 (arrow) was detected using the purified GPC6 polyclonal antibody (1 : 60 dilution).