

Datasheet for ABIN545416  
**anti-GPR37 antibody (N-Term)**[2 Images](#)[3 Publications](#)[Go to Product page](#)

## Overview

Quantity:	400 µL
Target:	GPR37
Binding Specificity:	N-Term
Reactivity:	Human, Mouse
Host:	Rabbit
Clonality:	Polyclonal
Conjugate:	This GPR37 antibody is un-conjugated
Application:	Western Blotting (WB), ELISA, Immunohistochemistry (Paraffin-embedded Sections) (IHC (p))

## Product Details

Purpose:	Rabbit polyclonal antibody raised against synthetic peptide of GPR37.
Immunogen:	A synthetic peptide (conjugated with KLH) corresponding to N-terminus of human GPR37.
Cross-Reactivity:	Human, Mouse

## Target Details

Target:	GPR37
Alternative Name:	GPR37 / PAEL Receptor ( <a href="#">GPR37 Products</a> )
Gene ID:	2861

## Application Details

Application Notes:	ELISA (1:1000) Western Blot (1:100-500) Immunohistochemistry (1:50-100) The optimal working dilution should be determined by the end user.
--------------------	---

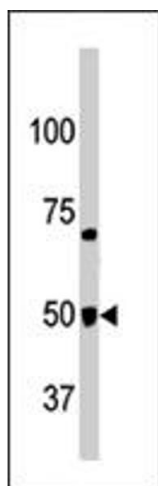
Restrictions:	For Research Use only
---------------	-----------------------

## Handling

Format:	Liquid
Buffer:	In PBS (0.09 % sodium azide)
Preservative:	Sodium azide
Precaution of Use:	This product contains Sodium azide: a POISONOUS AND HAZARDOUS SUBSTANCE which should be handled by trained staff only.
Storage:	4 °C, -20 °C
Storage Comment:	Store at 4°C. For long term storage store at -20°C. Aliquot to avoid repeated freezing and thawing.

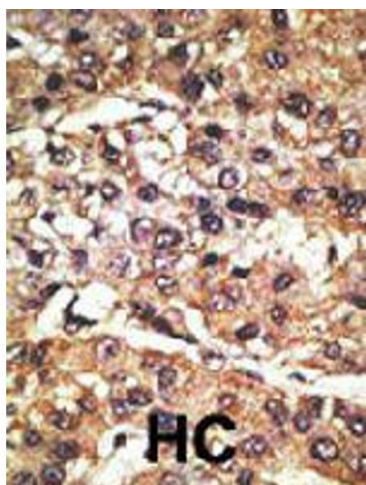
## Publications

Product cited in:	<p>Yang, Nishimura, Imai, Takahashi, Lu: "Parkin suppresses dopaminergic neuron-selective neurotoxicity induced by Pael-R in Drosophila." in: <b>Neuron</b>, Vol. 37, Issue 6, pp. 911-24, (2003) (<a href="#">PubMed</a>).</p> <p>Imai, Soda, Hatakeyama, Akagi, Hashikawa, Nakayama, Takahashi: "CHIP is associated with Parkin, a gene responsible for familial Parkinson's disease, and enhances its ubiquitin ligase activity." in: <b>Molecular cell</b>, Vol. 10, Issue 1, pp. 55-67, (2002) (<a href="#">PubMed</a>).</p> <p>Imai, Soda, Inoue, Hattori, Mizuno, Takahashi: "An unfolded putative transmembrane polypeptide, which can lead to endoplasmic reticulum stress, is a substrate of Parkin." in: <b>Cell</b>, Vol. 105, Issue 7, pp. 891-902, (2001) (<a href="#">PubMed</a>).</p>
-------------------	---



#### Western Blotting

**Image 1.** Western blot analysis of GPR37 polyclonal antibody in mouse brain tissue lysate. GPR37 (arrow) was detected using the purified GPR37 polyclonal antibody.



#### Immunohistochemistry

**Image 2.** Formalin-fixed and paraffin-embedded human hepatocellular carcinoma tissue reacted with GPR37 polyclonal antibody, which was peroxidase-conjugated to the secondary antibody, followed by DAB staining. This data demonstrates the use of this antibody for immunohistochemistry; clinical relevance has not been evaluated. HC = hepatocarcinoma.