



[Go to Product page](#)

Datasheet for ABIN545434

## anti-Aurora Kinase C antibody (N-Term)

### 2 Images

#### Overview

Quantity:	400 µL
Target:	Aurora Kinase C (AURKC)
Binding Specificity:	N-Term
Reactivity:	Human
Host:	Rabbit
Clonality:	Polyclonal
Conjugate:	This Aurora Kinase C antibody is un-conjugated
Application:	Western Blotting (WB), ELISA, Immunofluorescence (IF)

#### Product Details

Purpose:	Rabbit polyclonal antibody raised against synthetic peptide of AURKC.
Immunogen:	A synthetic peptide (conjugated with KLH) corresponding to N-terminus of human AURKC.
Cross-Reactivity:	Human

#### Target Details

Target:	Aurora Kinase C (AURKC)
Alternative Name:	Aurora kinase C ( <a href="#">AURKC Products</a> )
Gene ID:	6795
Pathways:	<a href="#">Cell Division Cycle</a> , <a href="#">Maintenance of Protein Location</a>

## Application Details

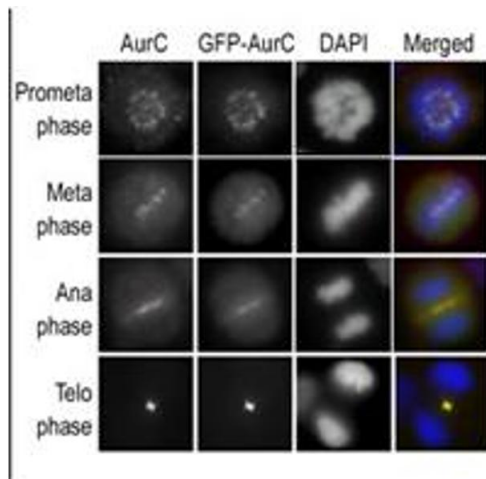
Application Notes:	ELISA (1:1000) Western Blot (1:100-500) Immunofluorescence (1:100-500) The optimal working dilution should be determined by the end user.
--------------------	--

Restrictions: For Research Use only

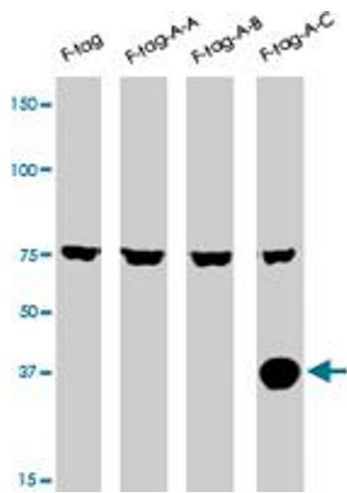
## Handling

Format:	Liquid
Buffer:	In PBS (0.09 % sodium azide)
Preservative:	Sodium azide
Precaution of Use:	This product contains Sodium azide: a POISONOUS AND HAZARDOUS SUBSTANCE which should be handled by trained staff only.
Storage:	4 °C,-20 °C
Storage Comment:	Store at 4°C. For long term storage store at -20°C. Aliquot to avoid repeated freezing and thawing.

## Images



**Image 1.** In the immunofluorescence experiment, staining of HeLa cells expressing GFP-AURKC is performed at different cellular mitotic stages with The AURKC polyclonal antibody (column A), GFP fluorescence (column B), DAPI nuclear staining (column C), and antiAURKC merged to DAPI staining (column D). Data is kindly provided by Drs . K . Sasai and S . Sen from the University of Texas MD Anderson Cancer Center (Houston, TX).



### Western Blotting

**Image 2.** The AURKC polyclonal antibody is used in Western blot to detect AURKC in lysates of 293 cells expressing Flag tag (lane 1) , Flag-tagged AURKA (lane 2) , Flag-tagged AURKB (lane 3) , Flag-tagged AURKC (lane 4) .