

Datasheet for ABIN545439
anti-GRK1 antibody (C-Term)[Go to Product page](#)

1 Image

Overview

Quantity:	400 µL
Target:	GRK1
Binding Specificity:	C-Term
Reactivity:	Human, Mouse
Host:	Rabbit
Clonality:	Polyclonal
Conjugate:	This GRK1 antibody is un-conjugated
Application:	Western Blotting (WB), ELISA, Immunohistochemistry (Paraffin-embedded Sections) (IHC (p))

Product Details

Purpose:	Rabbit polyclonal antibody raised against synthetic peptide of GRK1.
Immunogen:	A synthetic peptide (conjugated with KLH) corresponding to C-terminus of human GRK1.
Cross-Reactivity:	Human, Mouse

Target Details

Target:	GRK1
Alternative Name:	Rhodopsin kinase (GRK1 Products)
Gene ID:	6011
Pathways:	Regulation of G-Protein Coupled Receptor Protein Signaling , Phototransduction

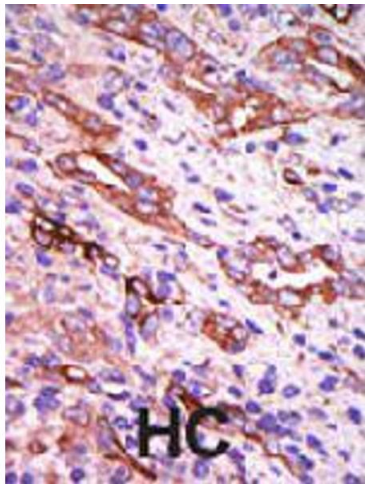
Application Details

Application Notes:	ELISA (1:1000) Western Blot (1:100-500) Immunohistochemistry (1:50-100) The optimal working dilution should be determined by the end user.
Restrictions:	For Research Use only

Handling

Format:	Liquid
Buffer:	In PBS (0.09 % sodium azide)
Preservative:	Sodium azide
Precaution of Use:	This product contains Sodium azide: a POISONOUS AND HAZARDOUS SUBSTANCE which should be handled by trained staff only.
Storage:	4 °C,-20 °C
Storage Comment:	Store at 4°C. For long term storage store at -20°C. Aliquot to avoid repeated freezing and thawing.

Images



Immunohistochemistry

Image 1. Formalin-fixed and paraffin-embedded human hepatocellular carcinoma tissue reacted with GRK1 polyclonal antibody , which was peroxidase-conjugated to the secondary antibody, followed by DAB staining . This data demonstrates the use of this antibody for immunohistochemistry; clinical relevance has not been evaluated . HC = hepatocarcinoma .