

Datasheet for ABIN545461

anti-PKC epsilon antibody (AA 213-243)



[Go to Product page](#)

3 Images

4 Publications

Overview

Quantity:	400 µL
Target:	PKC epsilon (PRKCE)
Binding Specificity:	AA 213-243
Reactivity:	Human
Host:	Rabbit
Clonality:	Polyclonal
Conjugate:	This PKC epsilon antibody is un-conjugated
Application:	Western Blotting (WB), ELISA, Immunohistochemistry (Paraffin-embedded Sections) (IHC (p))

Product Details

Purpose:	Rabbit polyclonal antibody raised against synthetic peptide of PRKCE.
Immunogen:	A synthetic peptide (conjugated with KLH) corresponding to amino acids 213-243 at N-terminus of human PRKCE.
Cross-Reactivity:	Human

Target Details

Target:	PKC epsilon (PRKCE)
Alternative Name:	PRKCE (PRKCE Products)
Gene ID:	5581
Pathways:	TCR Signaling , EGFR Signaling Pathway , Neurotrophin Signaling Pathway , Positive Regulation

Target Details

of Peptide Hormone Secretion, Activation of Innate immune Response, Cellular Response to Molecule of Bacterial Origin, Regulation of Actin Filament Polymerization, Myometrial Relaxation and Contraction, Regulation of Carbohydrate Metabolic Process, Interaction of EGFR with phospholipase C-gamma, Thromboxane A2 Receptor Signaling

Application Details

Application Notes: ELISA (1:1000)
Western Blot (1:100-500)
Immunohistochemistry (1:50-100)
The optimal working dilution should be determined by the end user.

Restrictions: For Research Use only

Handling

Format: Liquid

Buffer: In PBS (0.09 % sodium azide)

Preservative: Sodium azide

Precaution of Use: This product contains Sodium azide: a POISONOUS AND HAZARDOUS SUBSTANCE which should be handled by trained staff only.

Storage: 4 °C, -20 °C

Storage Comment: Store at 4°C. For long term storage store at -20°C.
Aliquot to avoid repeated freezing and thawing.

Publications

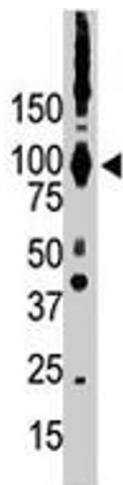
Product cited in: Tang, Bouyer, Mykoniatis, Buschmann, Matlin, Matthews: "Activated PKC{delta} and PKC{epsilon} inhibit epithelial chloride secretion response to cAMP via inducing internalization of the Na⁺-K⁺-2Cl⁻ cotransporter NKCC1." in: **The Journal of biological chemistry**, Vol. 285, Issue 44, pp. 34072-85, (2010) ([PubMed](#)).

Gray, Zhou, Schafhalter-Zoppoth, Zhu, Mochly-Rosen, Messing: "Preservation of base-line hemodynamic function and loss of inducible cardioprotection in adult mice lacking protein kinase C epsilon." in: **The Journal of biological chemistry**, Vol. 279, Issue 5, pp. 3596-604, (2004) ([PubMed](#)).

Ling, Troll r, Zeidman, Lundberg, Larsson: "Induction of neurites by the regulatory domains of PKCdelta and epsilon is counteracted by PKC catalytic activity and by the RhoA pathway." in: **Experimental cell research**, Vol. 292, Issue 1, pp. 135-50, (2004) ([PubMed](#)).

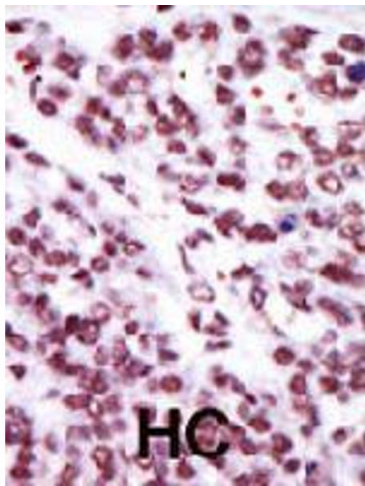
McJilton, Van Sikes, Wescott, Wu, Foreman, Gregory, Weidner, Harris Ford, Morgan Lasater, Mohler, Terrian: "Protein kinase Cepsilon interacts with Bax and promotes survival of human prostate cancer cells." in: **Oncogene**, Vol. 22, Issue 39, pp. 7958-68, (2003) ([PubMed](#)).

Images



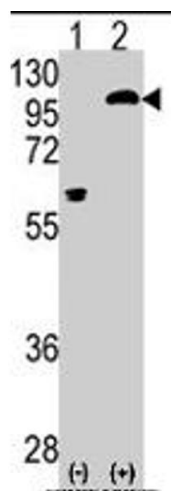
Western Blotting

Image 1. Western blot analysis of PRKCE polyclonal antibody in placenta lysate . PRKCE (Arrow) was detected using PRKCE polyclonal antibody . Secondary HRP-anti-rabbit was used for signal visualization with chemiluminescence .



Immunohistochemistry

Image 2. Formalin-fixed and paraffin-embedded human hepatocellular carcinoma tissue reacted with PRKCE polyclonal antibody , which was peroxidase-conjugated to the secondary antibody, followed by AEC staining . This data demonstrates the use of this antibody for immunohistochemistry; clinical relevance has not been evaluated . HC = hepatocarcinoma .



Western Blotting

Image 3. Western blot analysis of PRKCE (arrow) using rabbit PRKCE polyclonal antibody . 293 cell lysates (2 ug/lane) either nontransfected (Lane 1) or transiently transfected with the PRKCE gene (Lane 2) (Origene Technologies).