

Datasheet for ABIN545467
anti-SCYL2 antibody (C-Term)[Go to Product page](#)

2 Images

1 Publication

Overview

Quantity:	400 µL
Target:	SCYL2
Binding Specificity:	C-Term
Reactivity:	Human, Mouse
Host:	Rabbit
Clonality:	Polyclonal
Conjugate:	This SCYL2 antibody is un-conjugated
Application:	Western Blotting (WB), ELISA, Immunohistochemistry (Paraffin-embedded Sections) (IHC (p))

Product Details

Purpose:	Rabbit polyclonal antibody raised against synthetic peptide of SCYL2.
Immunogen:	A synthetic peptide (conjugated with KLH) corresponding to C-terminus of human SCYL2.
Cross-Reactivity:	Human, Mouse

Target Details

Target:	SCYL2
Alternative Name:	SCYL2 (SCYL2 Products)
Gene ID:	55681

Application Details

Application Notes:	ELISA (1:1000) Western Blot (1:100-500) Immunohistochemistry (1:10-50) The optimal working dilution should be determined by the end user.
--------------------	--

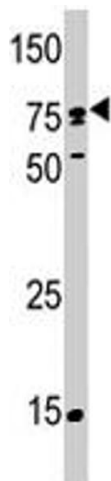
Restrictions:	For Research Use only
---------------	-----------------------

Handling

Format:	Liquid
Buffer:	In PBS (0.09 % sodium azide)
Preservative:	Sodium azide
Precaution of Use:	This product contains Sodium azide: a POISONOUS AND HAZARDOUS SUBSTANCE which should be handled by trained staff only.
Storage:	4 °C, -20 °C
Storage Comment:	Store at 4°C. For long term storage store at -20°C. Aliquot to avoid repeated freezing and thawing.

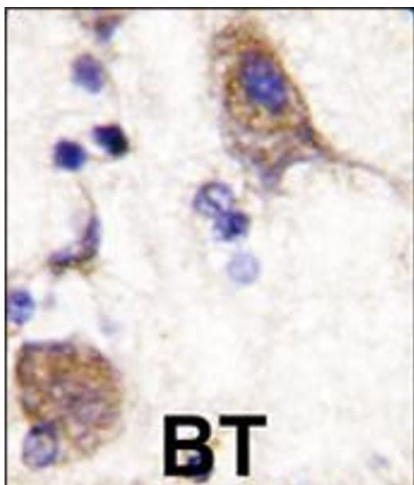
Publications

Product cited in:	Ota, Suzuki, Nishikawa, Otsuki, Sugiyama, Irie, Wakamatsu, Hayashi, Sato, Nagai, Kimura, Makita, Sekine, Obayashi, Nishi, Shibahara, Tanaka, Ishii, Yamamoto, Saito, Kawai, Isono, Nakamura, Nagahari et al.: "Complete sequencing and characterization of 21,243 full-length human cDNAs. ..." in: Nature genetics , Vol. 36, Issue 1, pp. 40-5, (2003) (PubMed).
-------------------	---



Western Blotting

Image 1. Western blot analysis of SCYL2 polyclonal antibody in T-47D . SCYL2 (arrow) was detected using the purified SCYL2 polyclonal antibody (1 : 60 dilution) .



Immunohistochemistry

Image 2. Formalin-fixed and paraffin-embedded human brain tissue reacted with SCYL2 polyclonal antibody , which was peroxidase-conjugated to the secondary antibody, followed by DAB staining . This data demonstrates the use of this antibody for immunohistochemistry; clinical relevance has not been evaluated .