

Datasheet for ABIN545497
anti-PKLR antibody (C-Term)[Go to Product page](#)[2 Images](#)[3 Publications](#)

Overview

Quantity:	400 µL
Target:	PKLR
Binding Specificity:	C-Term
Reactivity:	Human, Mouse
Host:	Rabbit
Clonality:	Polyclonal
Conjugate:	This PKLR antibody is un-conjugated
Application:	Western Blotting (WB), ELISA, Immunohistochemistry (Paraffin-embedded Sections) (IHC (p))

Product Details

Purpose:	Rabbit polyclonal antibody raised against synthetic peptide of PKLR.
Immunogen:	A synthetic peptide (conjugated with KLH) corresponding to C-terminus of human PKLR.
Cross-Reactivity:	Human, Mouse

Target Details

Target:	PKLR
Alternative Name:	PKLR (PKLR Products)
Gene ID:	5313
Pathways:	Ribonucleoside Biosynthetic Process

Application Details

Application Notes:	ELISA (1:1000) Western Blot (1:100-500) Immunohistochemistry (1:50-100) The optimal working dilution should be determined by the end user.
--------------------	---

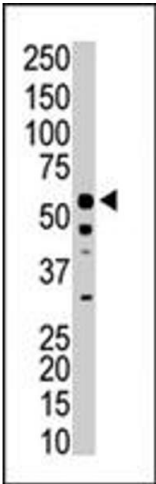
Restrictions:	For Research Use only
---------------	-----------------------

Handling

Format:	Liquid
Buffer:	In PBS (0.09 % sodium azide)
Preservative:	Sodium azide
Precaution of Use:	This product contains Sodium azide: a POISONOUS AND HAZARDOUS SUBSTANCE which should be handled by trained staff only.
Storage:	4 °C, -20 °C
Storage Comment:	Store at 4°C. For long term storage store at -20°C. Aliquot to avoid repeated freezing and thawing.

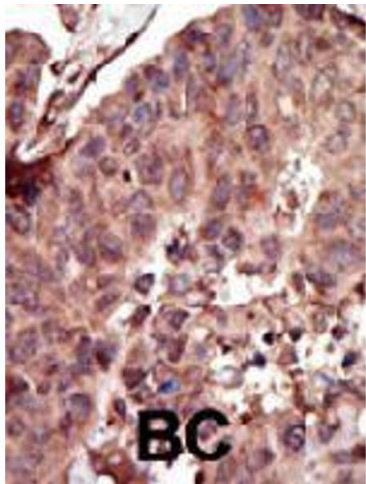
Publications

Product cited in:	<p>Wang, Chu, Das, Ren, Hasstedt, Elbein: "Liver pyruvate kinase polymorphisms are associated with type 2 diabetes in northern European Caucasians." in: Diabetes, Vol. 51, Issue 9, pp. 2861-5 , (2002) (PubMed).</p> <p>Valentini, Chiarelli, Fortin, Dolzan, Galizzi, Abraham, Wang, Bianchi, Zanella, Mattevi: "Structure and function of human erythrocyte pyruvate kinase. Molecular basis of nonspherocytic hemolytic anemia." in: The Journal of biological chemistry, Vol. 277, Issue 26, pp. 23807-14, (2002) (PubMed).</p> <p>Mateu, Pérez-Lezaun, Martínez-Arias, Andrés, Vallés, Bertranpetit, Calafell: "PKLR- GBA region shows almost complete linkage disequilibrium over 70 kb in a set of worldwide populations." in: Human genetics, Vol. 110, Issue 6, pp. 532-44, (2002) (PubMed).</p>
-------------------	---



Western Blotting

Image 1. The PKLR polyclonal antibody is used in Western blot to detect PKLR in mouse liver tissue lysate .



Immunohistochemistry

Image 2. Formalin-fixed and paraffin-embedded human cancer tissue reacted with PKLR polyclonal antibody , which was peroxidase-conjugated to the secondary antibody, followed by AEC staining . This data demonstrates the use of this antibody for immunohistochemistry; clinical relevance has not been evaluated . BC = breast carcinoma .