



[Go to Product page](#)

Datasheet for ABIN545518  
**anti-CKB antibody (N-Term)**

1 Image

### Overview

Quantity:	400 µL
Target:	CKB
Binding Specificity:	N-Term
Reactivity:	Human, Mouse
Host:	Rabbit
Clonality:	Polyclonal
Conjugate:	This CKB antibody is un-conjugated
Application:	Western Blotting (WB), ELISA

### Product Details

Purpose:	Rabbit polyclonal antibody raised against synthetic peptide of CKB.
Immunogen:	A synthetic peptide (conjugated with KLH) corresponding to N-terminus of human CKB.
Cross-Reactivity:	Human, Mouse

### Target Details

Target:	CKB
Alternative Name:	CKBB ( <a href="#">CKB Products</a> )
Gene ID:	1152

## Application Details

Application Notes: ELISA (1:1000)  
Western Blot (1:100-500)  
The optimal working dilution should be determined by the end user.

Restrictions: For Research Use only

## Handling

Format: Liquid

Buffer: In PBS (0.09 % sodium azide)

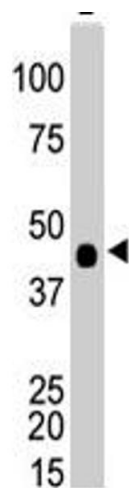
Preservative: Sodium azide

Precaution of Use: This product contains Sodium azide: a POISONOUS AND HAZARDOUS SUBSTANCE which should be handled by trained staff only.

Storage: 4 °C,-20 °C

Storage Comment: Store at 4°C. For long term storage store at -20°C.  
Aliquot to avoid repeated freezing and thawing.

## Images



### Western Blotting

**Image 1.** The CKB polyclonal antibody is used in Western blot to detect CKB in Y-79 cell lysate .