

Datasheet for ABIN545533

anti-Ethanolamine Kinase 1 antibody (C-Term)[Go to Product page](#)**1** Image

Overview

Quantity:	400 µL
Target:	Ethanolamine Kinase 1 (ETNK1)
Binding Specificity:	C-Term
Reactivity:	Human, Mouse, Hamster
Host:	Rabbit
Clonality:	Polyclonal
Conjugate:	This Ethanolamine Kinase 1 antibody is un-conjugated
Application:	ELISA, Western Blotting (WB)

Product Details

Purpose:	Rabbit polyclonal antibody raised against synthetic peptide of ETNK1.
Immunogen:	A synthetic peptide (conjugated with KLH) corresponding to C-terminus of human ETNK1.
Cross-Reactivity:	Hamster, Human, Mouse

Target Details

Target:	Ethanolamine Kinase 1 (ETNK1)
Alternative Name:	Ethanolamine kinase 1 (ETNK1 Products)
Gene ID:	55500

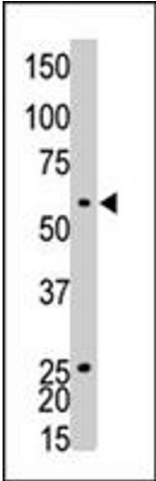
Application Details

Application Notes:	ELISA (1:1000) Western Blot (1:100-500) The optimal working dilution should be determined by the end user.
Restrictions:	For Research Use only

Handling

Format:	Liquid
Buffer:	In PBS (0.09 % sodium azide)
Preservative:	Sodium azide
Precaution of Use:	This product contains Sodium azide: a POISONOUS AND HAZARDOUS SUBSTANCE which should be handled by trained staff only.
Storage:	4 °C,-20 °C
Storage Comment:	Store at 4°C. For long term storage store at -20°C. Aliquot to avoid repeated freezing and thawing.

Images



Western Blotting

Image 1. The ETNK1 polyclonal antibody is used in Western blot to detect ETNK1 in CHO cell lysate .