

Datasheet for ABIN545534

anti-Ketohexokinase antibody (N-Term)[Go to Product page](#)**1** Image

Overview

Quantity:	400 µL
Target:	Ketohexokinase (KHK)
Binding Specificity:	N-Term
Reactivity:	Human, Mouse
Host:	Rabbit
Clonality:	Polyclonal
Conjugate:	This Ketohexokinase antibody is un-conjugated
Application:	Western Blotting (WB), ELISA

Product Details

Purpose:	Rabbit polyclonal antibody raised against synthetic peptide of KHK.
Immunogen:	A synthetic peptide (conjugated with KLH) corresponding to N-terminus of human KHK.
Cross-Reactivity:	Human, Mouse

Target Details

Target:	Ketohexokinase (KHK)
Alternative Name:	Ketohexokinase (KHK Products)
Gene ID:	3795

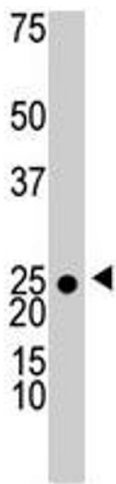
Application Details

Application Notes:	ELISA (1:1000) Western Blot (1:100-500) The optimal working dilution should be determined by the end user.
Restrictions:	For Research Use only

Handling

Format:	Liquid
Buffer:	In PBS (0.09 % sodium azide)
Preservative:	Sodium azide
Precaution of Use:	This product contains Sodium azide: a POISONOUS AND HAZARDOUS SUBSTANCE which should be handled by trained staff only.
Storage:	4 °C,-20 °C
Storage Comment:	Store at 4°C. For long term storage store at -20°C. Aliquot to avoid repeated freezing and thawing.

Images



Western Blotting

Image 1. The KHK polyclonal antibody is used in Western blot to detect KHK in 293 cell lysate .