

Datasheet for ABIN545538
anti-CKMT1A antibody (AA 55-84)[Go to Product page](#)

1 Image

Overview

Quantity:	400 µL
Target:	CKMT1A
Binding Specificity:	AA 55-84
Reactivity:	Human, Mouse
Host:	Rabbit
Clonality:	Polyclonal
Conjugate:	This CKMT1A antibody is un-conjugated
Application:	Western Blotting (WB), ELISA

Product Details

Purpose:	Rabbit polyclonal antibody raised against synthetic peptide of CKMT1A.
Immunogen:	A synthetic peptide (conjugated with KLH) corresponding to between amino acids 55-84 at N-terminus of human CKMT1A.
Cross-Reactivity:	Human, Mouse

Target Details

Target:	CKMT1A
Alternative Name:	CKMT1A (CKMT1A Products)
Gene ID:	548596

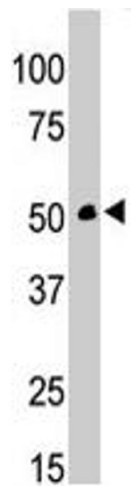
Application Details

Application Notes:	ELISA Western Blot (~1:1000) The optimal working dilution should be determined by the end user.
Restrictions:	For Research Use only

Handling

Format:	Liquid
Buffer:	In PBS (0.09 % sodium azide).
Preservative:	Sodium azide
Precaution of Use:	This product contains Sodium azide: a POISONOUS AND HAZARDOUS SUBSTANCE which should be handled by trained staff only.
Storage:	4 °C,-20 °C
Storage Comment:	Store at 4°C for up to 2 weeks. For long term storage, store at -20°C. Aliquot to avoid repeated freezing and thawing.

Images



Western Blotting

Image 1. The CKMT1A polyclonal antibody is used in Western blot to detect CKMT1A in ZR-75-1 cell lysate .