

Datasheet for ABIN545540  
**anti-CKMT2 antibody (N-Term)**[Go to Product page](#)

## 1 Image

## Overview

Quantity:	400 µL
Target:	CKMT2
Binding Specificity:	N-Term
Reactivity:	Human, Mouse
Host:	Rabbit
Clonality:	Polyclonal
Conjugate:	This CKMT2 antibody is un-conjugated
Application:	Western Blotting (WB), ELISA

## Product Details

Purpose:	Rabbit polyclonal antibody raised against synthetic peptide of CKMT2.
Immunogen:	A synthetic peptide (conjugated with KLH) corresponding to N-terminus of human CKMT2.
Cross-Reactivity:	Human, Mouse

## Target Details

Target:	CKMT2
Alternative Name:	CKMT2 ( <a href="#">CKMT2 Products</a> )
Gene ID:	1160

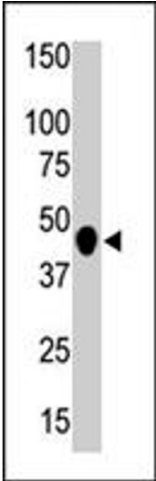
## Application Details

Application Notes:	ELISA (1:1000) Western Blot (1:100-500) The optimal working dilution should be determined by the end user.
Restrictions:	For Research Use only

## Handling

Format:	Liquid
Buffer:	In PBS (0.09 % sodium azide)
Preservative:	Sodium azide
Precaution of Use:	This product contains Sodium azide: a POISONOUS AND HAZARDOUS SUBSTANCE which should be handled by trained staff only.
Storage:	4 °C,-20 °C
Storage Comment:	Store at 4°C. For long term storage store at -20°C. Aliquot to avoid repeated freezing and thawing.

## Images



### Western Blotting

**Image 1.** The CKMT2 polyclonal antibody is used in Western blot to detect CKMT2 in mouse heart tissue lysate .