

Datasheet for ABIN545576  
**anti-BCKDK antibody (C-Term)**

## 2 Images

[Go to Product page](#)

## Overview

Quantity:	400 µL
Target:	BCKDK
Binding Specificity:	C-Term
Reactivity:	Human, Mouse
Host:	Rabbit
Clonality:	Polyclonal
Conjugate:	This BCKDK antibody is un-conjugated
Application:	Western Blotting (WB), ELISA

## Product Details

Purpose:	Rabbit polyclonal antibody raised against synthetic peptide of BCKDK.
Immunogen:	A synthetic peptide (conjugated with KLH) corresponding to C-terminus of human BCKDK.
Cross-Reactivity:	Human, Mouse

## Target Details

Target:	BCKDK
Alternative Name:	BCKDK ( <a href="#">BCKDK Products</a> )
Gene ID:	10295
Pathways:	<a href="#">SARS-CoV-2 Protein Interactome</a>

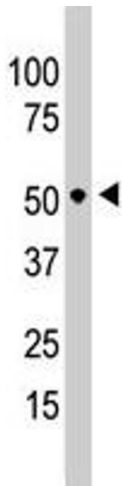
Application Details

Application Notes:	ELISA (1:1000) Western Blot (1:100-500) The optimal working dilution should be determined by the end user.
Restrictions:	For Research Use only

Handling

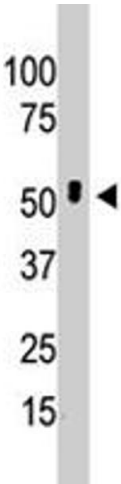
Format:	Liquid
Buffer:	In PBS (0.09 % sodium azide)
Preservative:	Sodium azide
Precaution of Use:	This product contains Sodium azide: a POISONOUS AND HAZARDOUS SUBSTANCE which should be handled by trained staff only.
Storage:	4 °C,-20 °C
Storage Comment:	Store at 4°C. For long term storage store at -20°C. Aliquot to avoid repeated freezing and thawing.

Images



**Western Blotting**

**Image 1.** The BCKDK polyclonal antibody is used in Western blot to detect BCKDK in HeLa cell lysate .



Western Blotting

**Image 2.** The BCKDK polyclonal antibody is used in Western blot to detect BCKDK in mouse intestine tissue lysate .