

Datasheet for ABIN545609

anti-ACE2 antibody (AA 140-172)

3 Images

3 Publications

[Go to Product page](#)

Overview

Quantity:	400 µL
Target:	ACE2
Binding Specificity:	AA 140-172
Reactivity:	Human
Host:	Rabbit
Clonality:	Polyclonal
Conjugate:	This ACE2 antibody is un-conjugated
Application:	Western Blotting (WB), ELISA, Immunohistochemistry (Paraffin-embedded Sections) (IHC (p))

Product Details

Purpose:	Rabbit polyclonal antibody raised against synthetic peptide of ACE2.
Immunogen:	A synthetic peptide (conjugated with KLH) corresponding to amino acids 140-172 at internal region of human ACE2.
Cross-Reactivity:	Human

Target Details

Target:	ACE2
Alternative Name:	ACE2 (ACE2 Products)
Gene ID:	59272
Pathways:	ACE Inhibitor Pathway , Peptide Hormone Metabolism , Regulation of Systemic Arterial Blood

Target Details

[Pressure by Hormones](#), [Feeding Behaviour](#)

Application Details

Application Notes:	ELISA (1:1000) Immunohistochemistry (1:50-100) Western Blot (1:50-200) Flow cytometry (1:10-50) The optimal working dilution should be determined by the end user.
--------------------	--

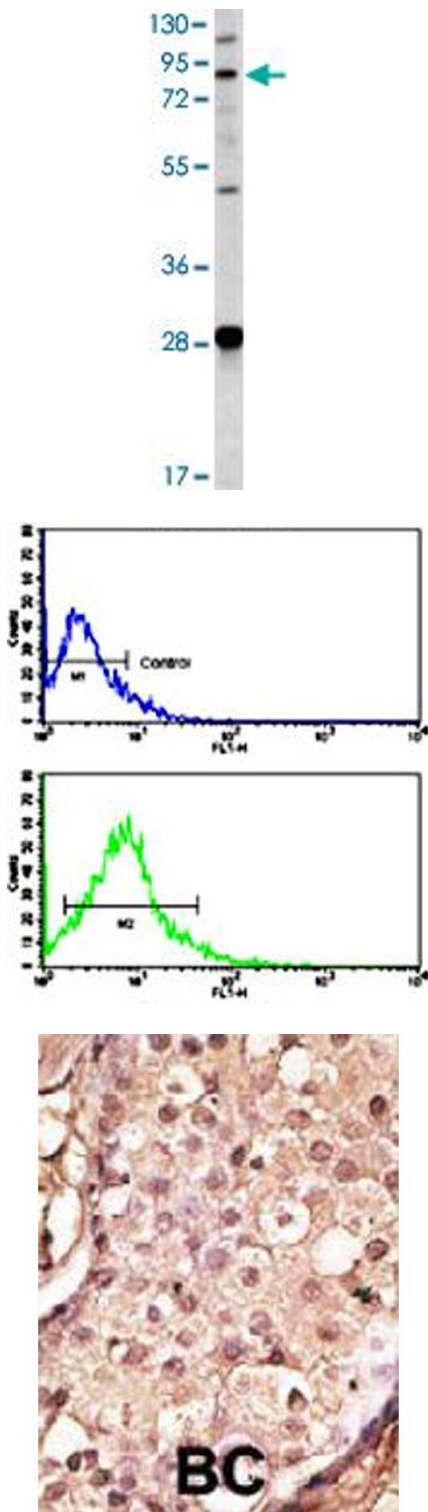
Restrictions:	For Research Use only
---------------	-----------------------

Handling

Format:	Liquid
Buffer:	In PBS (0.09 % sodium azide).
Preservative:	Sodium azide
Precaution of Use:	This product contains Sodium azide: a POISONOUS AND HAZARDOUS SUBSTANCE which should be handled by trained staff only.
Storage:	4 °C, -20 °C
Storage Comment:	Store at 4°C. For long term storage store at -20°C. Aliquot to avoid repeated freezing and thawing.

Publications

Product cited in:	Towler, Staker, Prasad, Menon, Tang, Parsons, Ryan, Fisher, Williams, Dales, Patane, Pantoliano: "ACE2 X-ray structures reveal a large hinge-bending motion important for inhibitor binding and catalysis." in: The Journal of biological chemistry , Vol. 279, Issue 17, pp. 17996-8007, (2004) (PubMed).
	Turner, Hiscox, Hooper: "ACE2: from vasopeptidase to SARS virus receptor." in: Trends in pharmacological sciences , Vol. 25, Issue 6, pp. 291-4, (2004) (PubMed).
	Douglas, OBryan, Hedger, Lee, Yarski, Smith, Lew: "The novel angiotensin-converting enzyme (ACE) homolog, ACE2, is selectively expressed by adult Leydig cells of the testis." in: Endocrinology , Vol. 145, Issue 10, pp. 4703-11, (2004) (PubMed).



Western Blotting

Image 1. Western blot analysis of HL-60 cell lysate (35 ug/lane) with ACE2 polyclonal antibody .

Flow Cytometry

Image 2. Flow cytometric analysis of HL-60 cells using ACE2 polyclonal antibody (bottom histogram) compared to a negative control cell (top histogram). FITC-conjugated goat-anti-rabbit secondary antibodies were used for the analysis.

Immunohistochemistry

Image 3. Formalin-fixed and paraffin-embedded human cancer tissue reacted with ACE2 polyclonal antibody , which was peroxidase-conjugated to the secondary antibody, followed by AEC staining. This data demonstrates the use of this antibody for immunohistochemistry ; clinical relevance has not been evaluated. BC = breast carcinoma.