

Datasheet for ABIN545611  
**anti-ACE2 antibody (AA 773-805)**

3 Images

3 Publications

[Go to Product page](#)

## Overview

Quantity:	400 µL
Target:	ACE2
Binding Specificity:	AA 773-805
Reactivity:	Human
Host:	Rabbit
Clonality:	Polyclonal
Conjugate:	This ACE2 antibody is un-conjugated
Application:	Western Blotting (WB), ELISA, Immunohistochemistry (Paraffin-embedded Sections) (IHC (p))

## Product Details

Purpose:	Rabbit polyclonal antibody raised against synthetic peptide of ACE2.
Immunogen:	A synthetic peptide (conjugated with KLH) corresponding to amino acids 773-805 at C-terminus of human ACE2.
Cross-Reactivity:	Human

## Target Details

Target:	ACE2
Alternative Name:	ACE2 ( <a href="#">ACE2 Products</a> )
Gene ID:	59272
Pathways:	<a href="#">ACE Inhibitor Pathway</a> , <a href="#">Peptide Hormone Metabolism</a> , <a href="#">Regulation of Systemic Arterial Blood</a>

## Target Details

[Pressure by Hormones](#), [Feeding Behaviour](#)

## Application Details

Application Notes: ELISA (1:1000)  
Western Blot (1:100-500)  
Immunohistochemistry (1:50-100)  
The optimal working dilution should be determined by the end user.

Restrictions: For Research Use only

## Handling

Format: Liquid

Buffer: In PBS (0.09 % sodium azide).

Preservative: Sodium azide

Precaution of Use: This product contains Sodium azide: a POISONOUS AND HAZARDOUS SUBSTANCE which should be handled by trained staff only.

Storage: 4 °C,-20 °C

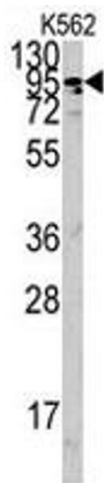
Storage Comment: Store at 4°C. For long term storage store at -20°C.  
Aliquot to avoid repeated freezing and thawing.

## Publications

Product cited in: Towler, Staker, Prasad, Menon, Tang, Parsons, Ryan, Fisher, Williams, Dales, Patane, Pantoliano: "ACE2 X-ray structures reveal a large hinge-bending motion important for inhibitor binding and catalysis." in: **The Journal of biological chemistry**, Vol. 279, Issue 17, pp. 17996-8007, (2004) ([PubMed](#)).

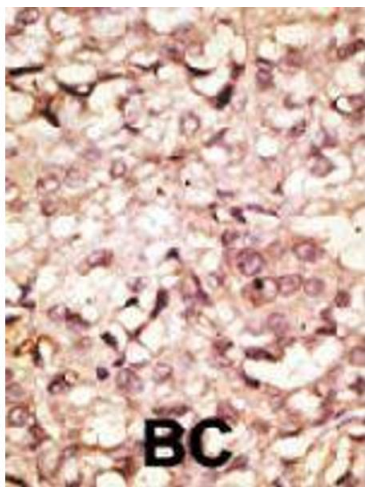
Turner, Hiscox, Hooper: "ACE2: from vasopeptidase to SARS virus receptor." in: **Trends in pharmacological sciences**, Vol. 25, Issue 6, pp. 291-4, (2004) ([PubMed](#)).

Douglas, OBryan, Hedger, Lee, Yarski, Smith, Lew: "The novel angiotensin-converting enzyme (ACE) homolog, ACE2, is selectively expressed by adult Leydig cells of the testis." in: **Endocrinology**, Vol. 145, Issue 10, pp. 4703-11, (2004) ([PubMed](#)).



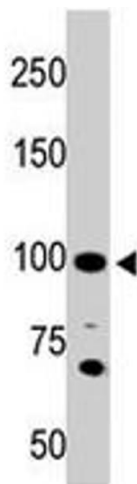
Western Blotting

**Image 1.** Western blot analysis of ACE2 polyclonal antibody in K-562 cell lysate (35 ug/lane). ACE2 (arrow) was detected using the purified polyclonal antibody.



Immunohistochemistry

**Image 2.** Formalin-fixed and paraffin-embedded human cancer tissue reacted with ACE2 polyclonal antibody , which was peroxidase-conjugated to the secondary antibody, followed by AEC staining. This data demonstrates the use of this antibody for immunohistochemistry ; clinical relevance has not been evaluated. BC = breast carcinoma.



Western Blotting

**Image 3.** The ACE2 polyclonal antibody is used in Western blot to detect ACE2 in 293 cell lysate.