

Datasheet for ABIN545626
anti-HAND2 antibody (C-Term)[Go to Product page](#)

2 Images

1 Publication

Overview

Quantity:	400 µL
Target:	HAND2
Binding Specificity:	C-Term
Reactivity:	Human
Host:	Rabbit
Clonality:	Polyclonal
Conjugate:	This HAND2 antibody is un-conjugated
Application:	Western Blotting (WB), ELISA, Immunohistochemistry (Paraffin-embedded Sections) (IHC (p))

Product Details

Purpose:	Rabbit polyclonal antibody raised against synthetic peptide of HAND2.
Immunogen:	A synthetic peptide (conjugated with KLH) corresponding to C-terminus of human HAND2.
Cross-Reactivity:	Human

Target Details

Target:	HAND2
Alternative Name:	HAND2 / DHAND (HAND2 Products)
Gene ID:	9464
Pathways:	Tube Formation , Feeding Behaviour

Application Details

Application Notes:	ELISA (1:1000) Western Blot (1:50-200) Immunohistochemistry (1:50-100) The optimal working dilution should be determined by the end user.
--------------------	--

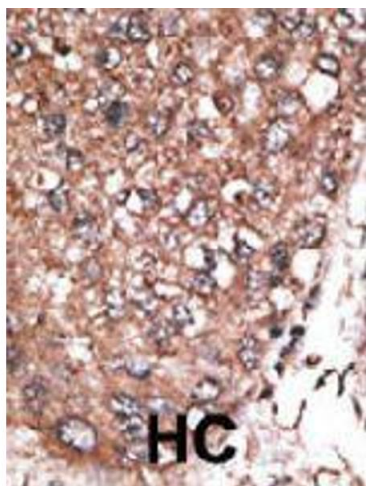
Restrictions:	For Research Use only
---------------	-----------------------

Handling

Format:	Liquid
Buffer:	In PBS (0.09 % sodium azide)
Preservative:	Sodium azide
Precaution of Use:	This product contains Sodium azide: a POISONOUS AND HAZARDOUS SUBSTANCE which should be handled by trained staff only.
Storage:	4 °C, -20 °C
Storage Comment:	Store at 4°C. For long term storage store at -20°C. Aliquot to avoid repeated freezing and thawing.

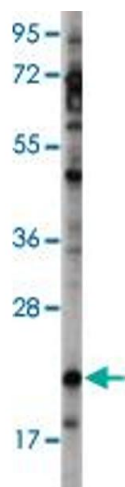
Publications

Product cited in:	McFadden, Charité, Richardson, Srivastava, Firulli, Olson: "A GATA-dependent right ventricular enhancer controls dHAND transcription in the developing heart." in: Development (Cambridge, England) , Vol. 127, Issue 24, pp. 5331-41, (2001) (PubMed).
-------------------	--



Immunohistochemistry

Image 1. Formalin-fixed and paraffin-embedded human hepatocellular carcinoma tissue reacted with HAND2 polyclonal antibody, which was peroxidase-conjugated to the secondary antibody, followed by AEC staining. This data demonstrates the use of this antibody for immunohistochemistry; clinical relevance has not been evaluated. HC = hepatocarcinoma.



Western Blotting

Image 2. Western blot analysis of HAND2 polyclonal antibody in NCI-H460 cell lysate (35 ug/lane). HAND2 (arrow) was detected using the purified polyclonal antibody.