

Datasheet for ABIN545664
anti-LRP8 antibody (AA 934-963)[2 Images](#)[3 Publications](#)[Go to Product page](#)

Overview

Quantity:	400 µL
Target:	LRP8
Binding Specificity:	AA 934-963
Reactivity:	Human
Host:	Rabbit
Clonality:	Polyclonal
Conjugate:	This LRP8 antibody is un-conjugated
Application:	Western Blotting (WB), ELISA, Immunohistochemistry (Paraffin-embedded Sections) (IHC (p))

Product Details

Purpose:	Rabbit polyclonal antibody raised against synthetic peptide of LRP8.
Immunogen:	A synthetic peptide (conjugated with KLH) corresponding to C-terminus amino acids 934-963 of human LRP8.
Cross-Reactivity:	Human

Target Details

Target:	LRP8
Alternative Name:	APOER2/LRP8 (LRP8 Products)
Gene ID:	7804

Application Details

Application Notes:	ELISA (1:1000) Western Blot (1:100-500) Immunohistochemistry (1:50-100) The optimal working dilution should be determined by the end user.
--------------------	---

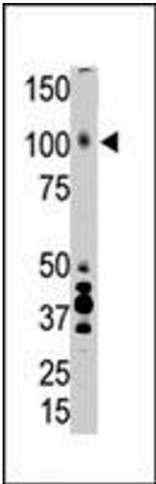
Restrictions:	For Research Use only
---------------	-----------------------

Handling

Format:	Liquid
Buffer:	In PBS (0.09 % sodium azide)
Preservative:	Sodium azide
Precaution of Use:	This product contains Sodium azide: a POISONOUS AND HAZARDOUS SUBSTANCE which should be handled by trained staff only.
Storage:	4 °C, -20 °C
Storage Comment:	Store at 4°C. For long term storage store at -20°C. Aliquot to avoid repeated freezing and thawing.

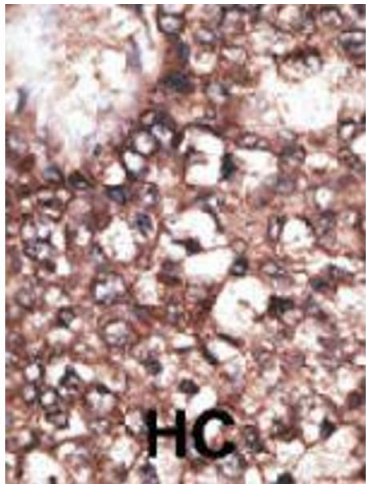
Publications

Product cited in:	<p>Li, Kypreos, Zanni, Zannis: "Domains of apoE required for binding to apoE receptor 2 and to phospholipids: implications for the functions of apoE in the brain." in: Biochemistry, Vol. 42, Issue 35, pp. 10406-17, (2003) (PubMed).</p> <p>Sun, Soutar: "The transmembrane domain and PXXP motifs of ApoE receptor 2 exclude it from carrying out clathrin-mediated endocytosis." in: The Journal of biological chemistry, Vol. 278, Issue 22, pp. 19926-32, (2003) (PubMed).</p> <p>Korschineck, Ziegler, Breuss, Lang, Lorenz, Kaun, Ambros, Binder: "Identification of a novel exon in apolipoprotein E receptor 2 leading to alternatively spliced mRNAs found in cells of the vascular wall but not in neuronal tissue." in: The Journal of biological chemistry, Vol. 276, Issue 16, pp. 13192-7, (2001) (PubMed).</p>
-------------------	---



Western Blotting

Image 1. The LRP8 polyclonal antibody is used in Western blot to detect LRP8 in placenta tissue lysate.



Immunohistochemistry

Image 2. Formalin-fixed and paraffin-embedded human hepatocellular carcinoma tissue reacted with LRP8 polyclonal antibody , which was peroxidase-conjugated to the secondary antibody, followed by DAB staining. This data demonstrates the use of this antibody for immunohistochemistry ; clinical relevance has not been evaluated. HC = hepatocarcinoma.