

Datasheet for ABIN545668
anti-MAGEA2 antibody (N-Term)[Go to Product page](#)

2 Images

Overview

Quantity:	400 µL
Target:	MAGEA2
Binding Specificity:	N-Term
Reactivity:	Human
Host:	Rabbit
Clonality:	Polyclonal
Application:	Western Blotting (WB), ELISA, Immunohistochemistry (Paraffin-embedded Sections) (IHC (p))

Product Details

Purpose:	Rabbit polyclonal antibody raised against synthetic peptide of MAGEA2.
Immunogen:	A synthetic peptide (conjugated with KLH) corresponding to N-terminus of human MAGEA2.
Cross-Reactivity:	Human

Target Details

Target:	MAGEA2
Alternative Name:	MAGEA2 (MAGEA2 Products)
Gene ID:	4101

Application Details

Application Notes:	ELISA (1:1000)
--------------------	----------------

Application Details

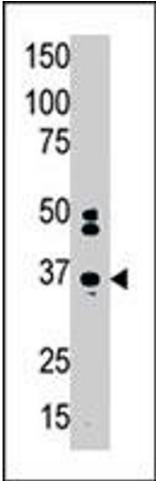
Western Blot (1:100-500)
Immunohistochemistry (1:50-100)
The optimal working dilution should be determined by the end user.

Restrictions: For Research Use only

Handling

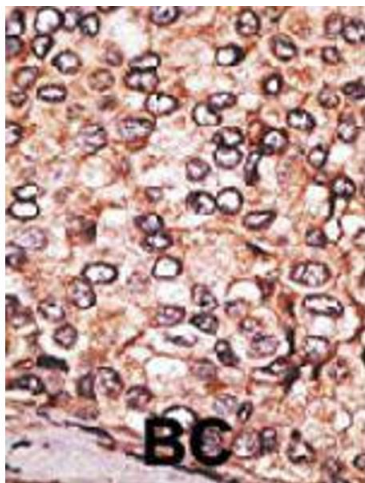
Format:	Liquid
Buffer:	In PBS (0.09 % sodium azide)
Preservative:	Sodium azide
Precaution of Use:	This product contains Sodium azide: a POISONOUS AND HAZARDOUS SUBSTANCE which should be handled by trained staff only.
Storage:	4 °C,-20 °C
Storage Comment:	Store at 4°C. For long term storage store at -20°C. Aliquot to avoid repeated freezing and thawing.

Images



Western Blotting

Image 1. The MAGEA2 polyclonal antibody is used in Western blot to detect MAGEA2 in HL-60 cell lysate.



Immunohistochemistry

Image 2. Formalin-fixed and paraffin-embedded human cancer tissue reacted with MAGEA2 polyclonal antibody , which was peroxidase-conjugated to the secondary antibody, followed by AEC staining. This data demonstrates the use of this antibody for immunohistochemistry ; clinical relevance has not been evaluated. BC = breast carcinoma.