



Datasheet for ABIN545669
anti-MAGEA3 antibody (AA 283-314)



[Go to Product page](#)

3 Images

1 Publication

Overview

Quantity:	400 µL
Target:	MAGEA3
Binding Specificity:	AA 283-314
Reactivity:	Human
Host:	Rabbit
Clonality:	Polyclonal
Conjugate:	This MAGEA3 antibody is un-conjugated
Application:	Western Blotting (WB), ELISA, Flow Cytometry (FACS), Immunohistochemistry (Paraffin-embedded Sections) (IHC (p))

Product Details

Purpose:	Rabbit polyclonal antibody raised against synthetic peptide of MAGEA3.
Immunogen:	A synthetic peptide (conjugated with KLH) corresponding to amino acids 283-314 from C-terminus of human MAGEA3.
Cross-Reactivity:	Human
Purification:	Protein G purification

Target Details

Target:	MAGEA3
Alternative Name:	MAGE-3 (MAGEA3 Products)

Target Details

Gene ID: 4102

Application Details

Application Notes: ELISA (1:1000)
Flow Cytometry (1:10-1:50)
Immunohistochemistry (1:10-1:50)
Western Blot (1:1000)
The optimal working dilution should be determined by the end user.

Restrictions: For Research Use only

Handling

Format: Liquid

Buffer: In PBS (0.09 % sodium azide)

Preservative: Sodium azide

Precaution of Use: This product contains Sodium azide: a POISONOUS AND HAZARDOUS SUBSTANCE which should be handled by trained staff only.

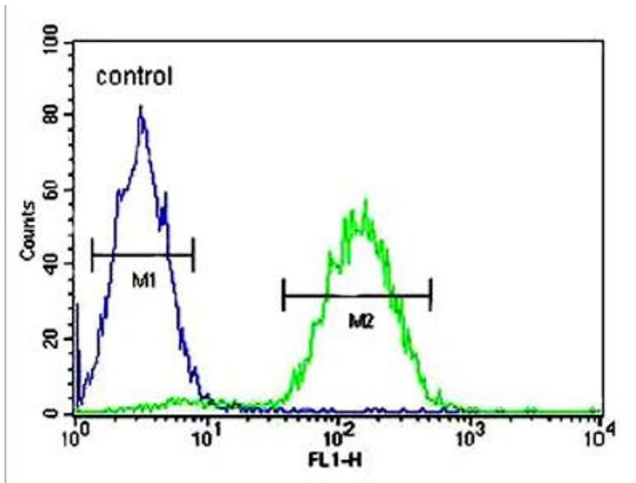
Handling Advice: Aliquot to avoid repeated freezing and thawing.

Storage: 4 °C, -20 °C

Storage Comment: Store at 4°C. For long term storage store at -20°C.
Aliquot to avoid repeated freezing and thawing.

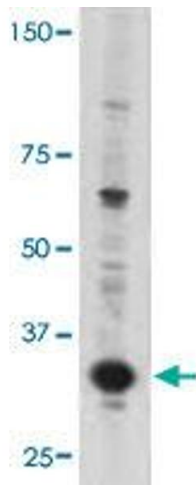
Publications

Product cited in: Kondo, Zhu, Asa, Ezzat: "The cancer/testis antigen melanoma-associated antigen-A3/A6 is a novel target of fibroblast growth factor receptor 2-IIIb through histone H3 modifications in thyroid cancer." in: **Clinical cancer research : an official journal of the American Association for Cancer Research**, Vol. 13, Issue 16, pp. 4713-20, (2007) ([PubMed](#)).



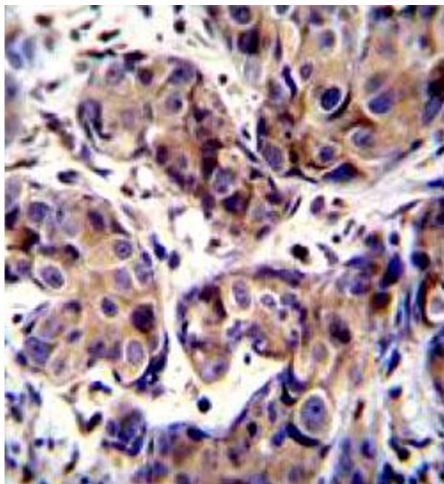
Flow Cytometry

Image 1. Flow cytometric analysis of Jurkat cells using MAGEA3 polyclonal antibody (right histogram) compared to a negative control cell (left histogram). FITC-conjugated goat-anti-rabbit secondary antibodies were used for the analysis



Western Blotting

Image 2. The MAGEA3 polyclonal antibody is used in Western blot to detect MAGEA3 in Jurkat cell lysate.



Immunohistochemistry

Image 3. Immunohistochemistry (Formalin/PFA-fixed paraffin-embedded sections) of human breast cancer tissue with MAGEA3 polyclonal antibody. Immunohistochemistry of formalin-fixed, paraffin-embedded tissue followed by peroxidase conjugation of the secondary antibody and DAB staining.