

Datasheet for ABIN545679

anti-MAGEC1 antibody (C-Term)**2** Images**1** Publication[Go to Product page](#)

Overview

Quantity:	400 µL
Target:	MAGEC1
Binding Specificity:	C-Term
Reactivity:	Human
Host:	Rabbit
Clonality:	Polyclonal
Conjugate:	This MAGEC1 antibody is un-conjugated
Application:	ELISA, Western Blotting (WB), Immunohistochemistry (Paraffin-embedded Sections) (IHC (p))

Product Details

Purpose:	Rabbit polyclonal antibody raised against synthetic peptide of MAGEC1.
Immunogen:	A synthetic peptide (conjugated with KLH) corresponding to C-terminus of human MAGEC1.
Cross-Reactivity:	Human

Target Details

Target:	MAGEC1
Alternative Name:	MAGE-C1 (MAGEC1 Products)
Gene ID:	9947

Application Details

Application Notes:	ELISA (1:1000) Western Blot (1:100-500) Immunohistochemistry (1:50-100) The optimal working dilution should be determined by the end user.
--------------------	---

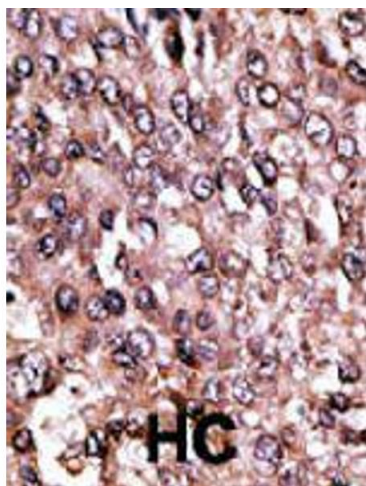
Restrictions:	For Research Use only
---------------	-----------------------

Handling

Format:	Liquid
Buffer:	In PBS (0.09 % sodium azide)
Preservative:	Sodium azide
Precaution of Use:	This product contains Sodium azide: a POISONOUS AND HAZARDOUS SUBSTANCE which should be handled by trained staff only.
Storage:	4 °C,-20 °C
Storage Comment:	Store at 4°C. For long term storage store at -20°C. Aliquot to avoid repeated freezing and thawing.

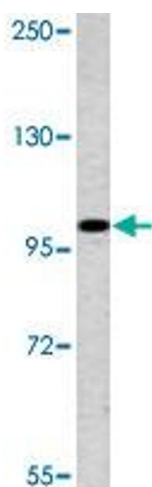
Publications

Product cited in:	Jungbluth, Chen, Busam, Coplan, Kolb, Iversen, Williamson, Van Landeghem, Stockert, Old: "CT7 (MAGE-C1) antigen expression in normal and neoplastic tissues." in: International journal of cancer. Journal international du cancer , Vol. 99, Issue 6, pp. 839-45, (2002) (PubMed).
-------------------	--



Immunohistochemistry

Image 1. Formalin-fixed and paraffin-embedded human hepatocellular carcinoma tissue reacted with MAGEC1 polyclonal antibody, which was peroxidase-conjugated to the secondary antibody, followed by AEC staining. This data demonstrates the use of this antibody for immunohistochemistry; clinical relevance has not been evaluated. HC = hepatocarcinoma.



Western Blotting

Image 2. Western blot analysis of K-562 cell lysate (35 ug/lane) with MAGEC1 polyclonal antibody.