

Datasheet for ABIN545681

anti-MAGED2 antibody (C-Term)**2** Images**1** Publication[Go to Product page](#)

Overview

Quantity:	400 µL
Target:	MAGED2
Binding Specificity:	C-Term
Reactivity:	Human
Host:	Rabbit
Clonality:	Polyclonal
Conjugate:	This MAGED2 antibody is un-conjugated
Application:	Western Blotting (WB), ELISA, Immunohistochemistry (Paraffin-embedded Sections) (IHC (p))

Product Details

Purpose:	Rabbit polyclonal antibody raised against synthetic peptide of MAGED2.
Immunogen:	A synthetic peptide (conjugated with KLH) corresponding to C-terminus of human MAGED2.
Cross-Reactivity:	Human

Target Details

Target:	MAGED2
Alternative Name:	MAGE-D2 (MAGED2 Products)
Gene ID:	10916

Application Details

Application Notes:	ELISA (1:1000) Western Blot (1:100-500) Immunohistochemistry (1:50-100) The optimal working dilution should be determined by the end user.
--------------------	---

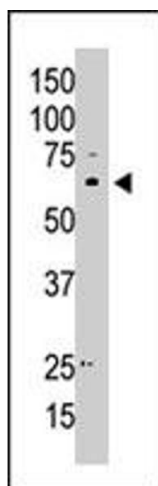
Restrictions:	For Research Use only
---------------	-----------------------

Handling

Format:	Liquid
Buffer:	In PBS (0.09 % sodium azide)
Preservative:	Sodium azide
Precaution of Use:	This product contains Sodium azide: a POISONOUS AND HAZARDOUS SUBSTANCE which should be handled by trained staff only.
Storage:	4 °C, -20 °C
Storage Comment:	Store at 4°C. For long term storage store at -20°C. Aliquot to avoid repeated freezing and thawing.

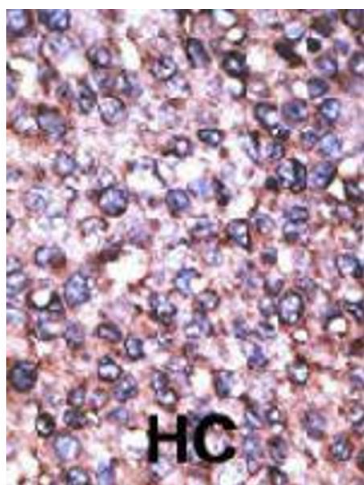
Publications

Product cited in:	Langnaese, Kloos, Wehnert, Seidel, Wieacker: "Expression pattern and further characterization of human MAGED2 and identification of rodent orthologues." in: Cytogenetics and cell genetics , Vol. 94, Issue 3-4, pp. 233-40, (2002) (PubMed).
-------------------	---



Western Blotting

Image 1. The MAGED2 polyclonal antibody is used in Western blot to detect MAGED2 in A-549 cell lysate.



Immunohistochemistry

Image 2. Formalin-fixed and paraffin-embedded human hepatocellular carcinoma tissue reacted with MAGED2 polyclonal antibody, which was peroxidase-conjugated to the secondary antibody, followed by AEC staining. This data demonstrates the use of this antibody for immunohistochemistry; clinical relevance has not been evaluated. HC = hepatocarcinoma.