

Datasheet for ABIN545684

**anti-MAGEH1 antibody (C-Term)**[2 Images](#)[2 Publications](#)[Go to Product page](#)

## Overview

Quantity:	400 µL
Target:	MAGEH1
Binding Specificity:	C-Term
Reactivity:	Human
Host:	Rabbit
Clonality:	Polyclonal
Conjugate:	This MAGEH1 antibody is un-conjugated
Application:	Western Blotting (WB), ELISA, Immunohistochemistry (Paraffin-embedded Sections) (IHC (p))

## Product Details

Purpose:	Rabbit polyclonal antibody raised against synthetic peptide of MAGEH1.
Immunogen:	A synthetic peptide (conjugated with KLH) corresponding to C-terminus of human MAGEH1.
Cross-Reactivity:	Human

## Target Details

Target:	MAGEH1
Alternative Name:	MAGE-H1 ( <a href="#">MAGEH1 Products</a> )
Gene ID:	28986
Pathways:	<a href="#">Neurotrophin Signaling Pathway</a>

## Application Details

Application Notes:	ELISA (1:1000) Western Blot (1:100-500) Immunohistochemistry (1:50-100) The optimal working dilution should be determined by the end user.
--------------------	---

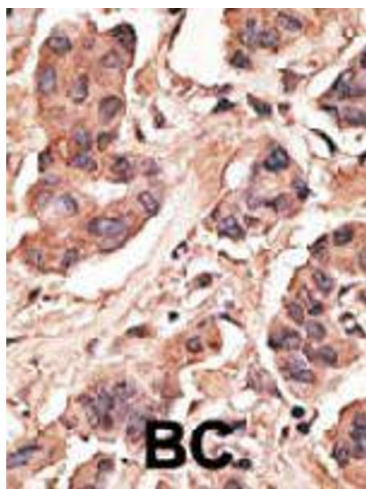
Restrictions:	For Research Use only
---------------	-----------------------

## Handling

Format:	Liquid
Buffer:	In PBS (0.09 % sodium azide)
Preservative:	Sodium azide
Precaution of Use:	This product contains Sodium azide: a POISONOUS AND HAZARDOUS SUBSTANCE which should be handled by trained staff only.
Storage:	4 °C, -20 °C
Storage Comment:	Store at 4°C. For long term storage store at -20°C. Aliquot to avoid repeated freezing and thawing.

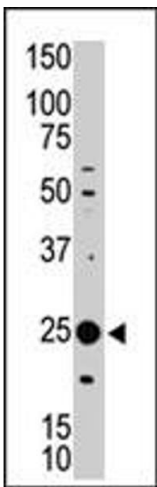
## Publications

Product cited in:	Chomez, De Backer, Bertrand, De Plaen, Boon, Lucas: "An overview of the MAGE gene family with the identification of all human members of the family." in: <b>Cancer research</b> , Vol. 61, Issue 14, pp. 5544-51, (2001) ( <a href="#">PubMed</a> ).  Zhu, Yan, Zhao, Chai, Lu, Wang, Peng, Yang, Wang: "Improved PCR-based subtractive hybridization strategy for cloning differentially expressed genes." in: <b>BioTechniques</b> , Vol. 29, Issue 2, pp. 310-3, (2000) ( <a href="#">PubMed</a> ).
-------------------	---



#### Immunohistochemistry

**Image 1.** Formalin-fixed and paraffin-embedded human cancer tissue reacted with MAGEH1 polyclonal antibody , which was peroxidase-conjugated to the secondary antibody, followed by DAB staining. This data demonstrates the use of this antibody for immunohistochemistry ; clinical relevance has not been evaluated. BC = breast carcinoma.



#### Western Blotting

**Image 2.** The MAGEH1 polyclonal antibody is used in Western blot to detect MAGEH1 in Jurkat cell lysate.