

Datasheet for ABIN545695
anti-AF9 antibody (N-Term)[Go to Product page](#)[1 Image](#)[1 Publication](#)

Overview

Quantity:	400 µL
Target:	AF9 (MLLT3)
Binding Specificity:	N-Term
Reactivity:	Human
Host:	Rabbit
Clonality:	Polyclonal
Conjugate:	This AF9 antibody is un-conjugated
Application:	Western Blotting (WB), ELISA

Product Details

Purpose:	Rabbit polyclonal antibody raised against synthetic peptide of MLLT3.
Immunogen:	A synthetic peptide (conjugated with KLH) corresponding to N-terminus of human MLLT3.
Cross-Reactivity:	Human

Target Details

Target:	AF9 (MLLT3)
Alternative Name:	MLLT3 / AF9 (MLLT3 Products)
Gene ID:	4300

Application Details

Application Notes:	ELISA (1:1000) Western Blot (1:100-500) The optimal working dilution should be determined by the end user.
Restrictions:	For Research Use only

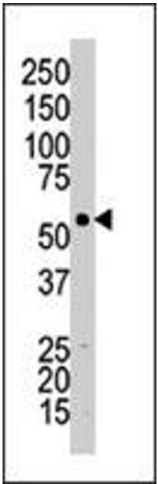
Handling

Format:	Liquid
Buffer:	In PBS (0.09 % sodium azide)
Preservative:	Sodium azide
Precaution of Use:	This product contains Sodium azide: a POISONOUS AND HAZARDOUS SUBSTANCE which should be handled by trained staff only.
Storage:	4 °C,-20 °C
Storage Comment:	Store at 4°C. For long term storage store at -20°C. Aliquot to avoid repeated freezing and thawing.

Publications

Product cited in:	Strissel, Strick, Tomek, Roe, Rowley, Zeleznik-Le: "DNA structural properties of AF9 are similar to MLL and could act as recombination hot spots resulting in MLL/AF9 translocations and leukemogenesis." in: Human molecular genetics , Vol. 9, Issue 11, pp. 1671-9, (2000) (PubMed).
-------------------	--

Images



Western Blotting

Image 1. The MLLT3 polyclonal antibody is used in Western blot to detect MLLT3 in HL-60 cell lysate