

Datasheet for ABIN545708  
**anti-MMP16 antibody (N-Term)**[2 Images](#)[1 Publication](#)[Go to Product page](#)

## Overview

Quantity:	400 µL
Target:	MMP16
Binding Specificity:	N-Term
Reactivity:	Human
Host:	Rabbit
Clonality:	Polyclonal
Conjugate:	This MMP16 antibody is un-conjugated
Application:	Western Blotting (WB), ELISA, Immunohistochemistry (Paraffin-embedded Sections) (IHC (p))

## Product Details

Purpose:	Rabbit polyclonal antibody raised against synthetic peptide of MMP16.
Immunogen:	A synthetic peptide (conjugated with KLH) corresponding to N-terminus of human MMP16.
Cross-Reactivity:	Hamster, Human

## Target Details

Target:	MMP16
Alternative Name:	MMP-16 ( <a href="#">MMP16 Products</a> )
Gene ID:	4325

## Application Details

Application Notes:	ELISA (1:1000) Western Blot (1:100-500) Immunohistochemistry (1:50-100) The optimal working dilution should be determined by the end user.
--------------------	---

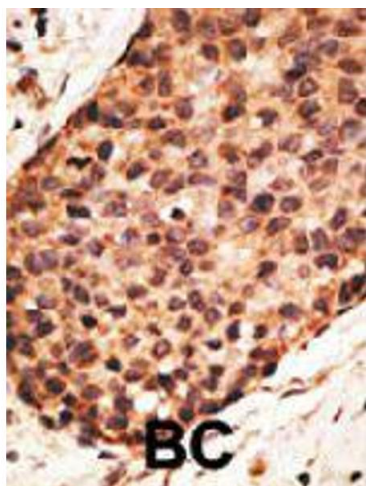
Restrictions:	For Research Use only
---------------	-----------------------

## Handling

Format:	Liquid
Buffer:	In PBS (0.09 % sodium azide)
Preservative:	Sodium azide
Precaution of Use:	This product contains Sodium azide: a POISONOUS AND HAZARDOUS SUBSTANCE which should be handled by trained staff only.
Storage:	4 °C, -20 °C
Storage Comment:	Store at 4°C. For long term storage store at -20°C. Aliquot to avoid repeated freezing and thawing.

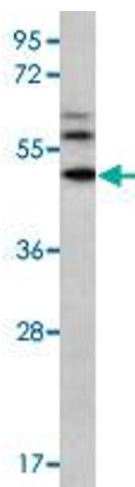
## Publications

Product cited in:	Jung, Römer, Keyszer, Lein, Kristiansen, Schnorr, Loening, Jung: "mRNA expression of the five membrane-type matrix metalloproteinases MT1-MT5 in human prostatic cell lines and their down-regulation in human malignant prostatic tissue." in: <b>The Prostate</b> , Vol. 55, Issue 2, pp. 89-98, (2003) ( <a href="#">PubMed</a> ).
-------------------	---



#### Immunohistochemistry

**Image 1.** Formalin-fixed and paraffin-embedded human cancer tissue reacted with MMP16 polyclonal antibody , which was peroxidase-conjugated to the secondary antibody, followed by AEC staining. This data demonstrates the use of this antibody for immunohistochemistry ; clinical relevance has not been evaluated. BC = breast carcinoma.



#### Western Blotting

**Image 2.** Western blot analysis of MDA-MB-435 cell lysate (35 ug/lane) with MMP16 polyclonal antibody .