

Datasheet for ABIN545710
anti-MMP19 antibody (C-Term)

3 Images

3 Publications

[Go to Product page](#)

Overview

Quantity:	400 µL
Target:	MMP19
Binding Specificity:	C-Term
Reactivity:	Human
Host:	Rabbit
Clonality:	Polyclonal
Conjugate:	This MMP19 antibody is un-conjugated
Application:	Western Blotting (WB), ELISA, Immunohistochemistry (Paraffin-embedded Sections) (IHC (p)), Flow Cytometry (FACS)

Product Details

Purpose:	Rabbit polyclonal antibody raised against synthetic peptide of MMP19.
Immunogen:	A synthetic peptide (conjugated with KLH) corresponding to C-terminus of human MMP19.
Cross-Reactivity:	Human

Target Details

Target:	MMP19
Alternative Name:	MMP-19 (MMP19 Products)
Gene ID:	4327

Application Details

Application Notes:	ELISA (1:1000) Western Blot (1:100-500) Immunohistochemistry (1:50-100) Flow cytometry (1:10-50) The optimal working dilution should be determined by the end user.
--------------------	---

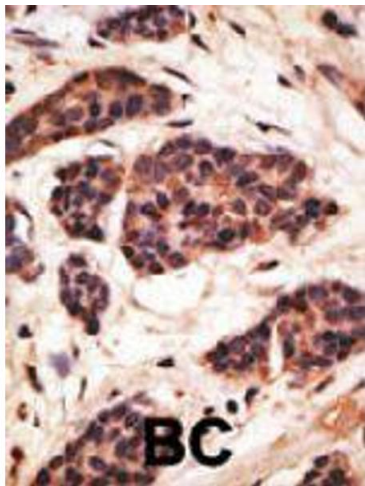
Restrictions:	For Research Use only
---------------	-----------------------

Handling

Format:	Liquid
Buffer:	In PBS (0.09 % sodium azide)
Preservative:	Sodium azide
Precaution of Use:	This product contains Sodium azide: a POISONOUS AND HAZARDOUS SUBSTANCE which should be handled by trained staff only.
Storage:	4 °C,-20 °C
Storage Comment:	Store at 4°C. For long term storage store at -20°C. Aliquot to avoid repeated freezing and thawing.

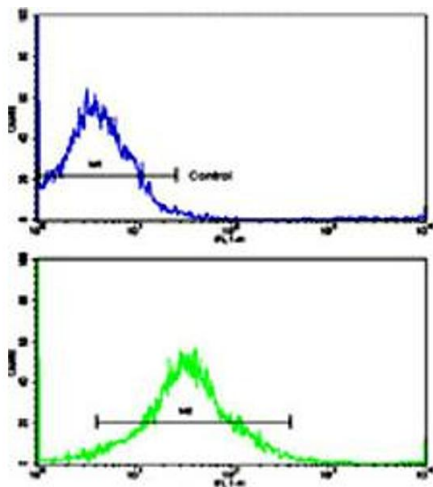
Publications

Product cited in:	<p>Sadowski, Dietrich, Koschinsky, Sedlacek et al.: "Matrix metalloproteinase 19 regulates insulin-like growth factor-mediated proliferation, migration, and adhesion in human keratinocytes through proteolysis of insulin-like growth factor binding ..." in: Molecular biology of the cell, Vol. 14, Issue 11, pp. 4569-80, (2003) (PubMed).</p> <p>Impola, Toriseva, Suomela, Jeskanen, Hieta, Jahkola, Grenman, Kähäri, Saarialho-Kere: "Matrix metalloproteinase-19 is expressed by proliferating epithelium but disappears with neoplastic dedifferentiation." in: International journal of cancer. Journal international du cancer, Vol. 103, Issue 6, pp. 709-16, (2003) (PubMed).</p> <p>Mauch, Kolb, Kolb, Sadowski, Sedlacek: "Matrix metalloproteinase-19 is expressed in myeloid cells in an adhesion-dependent manner and associates with the cell surface." in: Journal of immunology (Baltimore, Md. : 1950), Vol. 168, Issue 3, pp. 1244-51, (2002) (PubMed).</p>
-------------------	--



Immunohistochemistry

Image 1. Formalin-fixed and paraffin-embedded human cancer tissue reacted with MMP19 polyclonal antibody , which was peroxidase-conjugated to the secondary antibody, followed by DAB staining. This data demonstrates the use of this antibody for immunohistochemistry ; clinical relevance has not been evaluated. BC = breast carcinoma.



Flow Cytometry

Image 2. Flow cytometric analysis of K-562 cells using MMP19 polyclonal antibody (bottom histogram) compared to a negative control cell (top histogram). FITC-conjugated goat-anti-rabbit secondary antibodies were used for the analysis.



Western Blotting

Image 3. Western blot analysis of K-562 cell lysate (35 ug/lane) with MMP19 polyclonal antibody .