

Datasheet for ABIN545738
anti-OASL antibody (C-Term)[Go to Product page](#)

2 Images

Overview

Quantity:	400 µL
Target:	OASL
Binding Specificity:	C-Term
Reactivity:	Human
Host:	Rabbit
Clonality:	Polyclonal
Conjugate:	This OASL antibody is un-conjugated
Application:	Western Blotting (WB), ELISA, Immunohistochemistry (Paraffin-embedded Sections) (IHC (p))

Product Details

Purpose:	Rabbit polyclonal antibody raised against synthetic peptide of OASL.
Immunogen:	A synthetic peptide (conjugated with KLH) corresponding to C-terminus of human OASL.
Cross-Reactivity:	Human

Target Details

Target:	OASL
Alternative Name:	OAS / TRIP14 (OASL Products)
Gene ID:	8638

Application Details

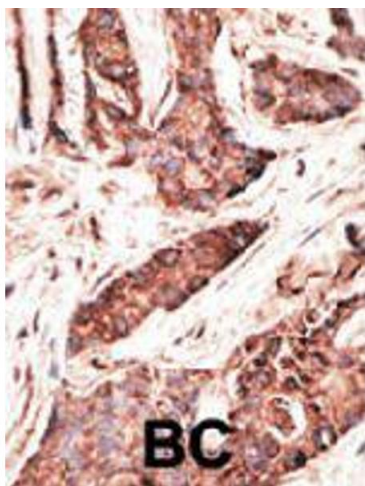
Application Notes:	ELISA (1:1000) Western Blot (1:100-500) Immunohistochemistry (1:50-100) The optimal working dilution should be determined by the end user.
--------------------	---

Restrictions:	For Research Use only
---------------	-----------------------

Handling

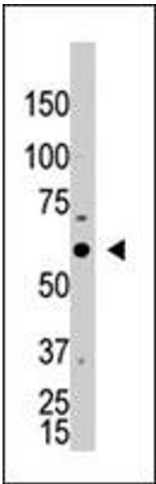
Format:	Liquid
Buffer:	In PBS (0.09 % sodium azide)
Preservative:	Sodium azide
Precaution of Use:	This product contains Sodium azide: a POISONOUS AND HAZARDOUS SUBSTANCE which should be handled by trained staff only.
Storage:	4 °C, -20 °C
Storage Comment:	Store at 4°C. For long term storage store at -20°C. Aliquot to avoid repeated freezing and thawing.

Images



Immunohistochemistry

Image 1. Formalin-fixed and paraffin-embedded human cancer tissue reacted with OASL polyclonal antibody, which was peroxidase-conjugated to the secondary antibody, followed by AEC staining. This data demonstrates the use of this antibody for immunohistochemistry; clinical relevance has not been evaluated. BC = breast carcinoma.



Western Blotting

Image 2. The OASL polyclonal antibody is used in Western blot to detect OASL in HL-60 lysate.