

Datasheet for ABIN545742  
**anti-SMYD5 antibody (C-Term)**[Go to Product page](#)

## 2 Images

## Overview

Quantity:	400 µL
Target:	SMYD5
Binding Specificity:	C-Term
Reactivity:	Human, Mouse
Host:	Rabbit
Clonality:	Polyclonal
Conjugate:	This SMYD5 antibody is un-conjugated
Application:	Western Blotting (WB), ELISA, Immunohistochemistry (Paraffin-embedded Sections) (IHC (p))

## Product Details

Purpose:	Rabbit polyclonal antibody raised against synthetic peptide of SMYD5.
Immunogen:	A synthetic peptide (conjugated with KLH) corresponding to C-terminus of human SMYD5.
Cross-Reactivity:	Human, Mouse

## Target Details

Target:	SMYD5
Alternative Name:	SMYD5 ( <a href="#">SMYD5 Products</a> )
Gene ID:	10322

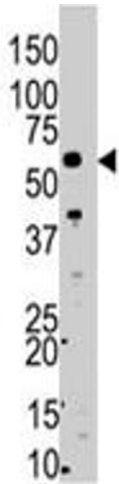
## Application Details

Application Notes:	ELISA (1:1000) Western Blot (1:100-500) Immunohistochemistry (1:50-100) The optimal working dilution should be determined by the end user.
Restrictions:	For Research Use only

## Handling

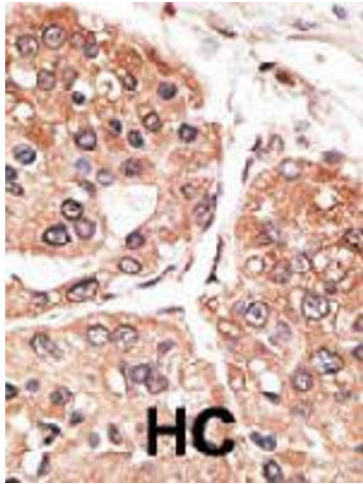
Format:	Liquid
Buffer:	In PBS (0.09 % sodium azide)
Preservative:	Sodium azide
Precaution of Use:	This product contains Sodium azide: a POISONOUS AND HAZARDOUS SUBSTANCE which should be handled by trained staff only.
Storage:	4 °C, -20 °C
Storage Comment:	Store at 4°C. For long term storage store at -20°C. Aliquot to avoid repeated freezing and thawing.

## Images



**Western Blotting**

**Image 1.** The SMYD5 polyclonal antibody is used in Western blot to detect SMYD5 in mouse liver tissue lysate.



#### Immunohistochemistry

**Image 2.** Formalin-fixed and paraffin-embedded human hepatocellular carcinoma tissue reacted with SMYD5 polyclonal antibody , which was peroxidase-conjugated to the secondary antibody, followed by DAB staining. This data demonstrates the use of this antibody for immunohistochemistry ; clinical relevance has not been evaluated. HC = hepatocarcinoma.