

Datasheet for ABIN545747

anti-GPRC5A antibody (C-Term)**1** Image**1** Publication[Go to Product page](#)

Overview

Quantity:	400 µL
Target:	GPRC5A
Binding Specificity:	C-Term
Reactivity:	Human
Host:	Rabbit
Clonality:	Polyclonal
Conjugate:	This GPRC5A antibody is un-conjugated
Application:	Western Blotting (WB), ELISA

Product Details

Purpose:	Rabbit polyclonal antibody raised against synthetic peptide of GPRC5A.
Immunogen:	A synthetic peptide (conjugated with KLH) corresponding to C-terminus of human GPRC5A.
Cross-Reactivity:	Human

Target Details

Target:	GPRC5A
Alternative Name:	GPRC5A / RAI3 (GPRC5A Products)
Gene ID:	9052

Application Details

Application Notes:	ELISA (1:1000) Western Blot (1:100-500) The optimal working dilution should be determined by the end user.
Restrictions:	For Research Use only

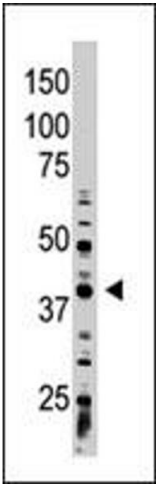
Handling

Format:	Liquid
Buffer:	In PBS (0.09 % sodium azide)
Preservative:	Sodium azide
Precaution of Use:	This product contains Sodium azide: a POISONOUS AND HAZARDOUS SUBSTANCE which should be handled by trained staff only.
Storage:	4 °C,-20 °C
Storage Comment:	Store at 4°C. For long term storage store at -20°C. Aliquot to avoid repeated freezing and thawing.

Publications

Product cited in:	Robbins, Michalovich, Hill, Calver, Medhurst, Gloger, Sims, Middlemiss, Pangalos: "Molecular cloning and characterization of two novel retinoic acid-inducible orphan G-protein-coupled receptors (GPRC5B and GPRC5C)." in: Genomics , Vol. 67, Issue 1, pp. 8-18, (2000) (PubMed).
-------------------	--

Images



Western Blotting

Image 1. The GPRC5A polyclonal antibody is used in Western blot to detect GPRC5A in A-375 cell lysate.