

Datasheet for ABIN545752
anti-ST14 antibody (C-Term)[Go to Product page](#)

1 Image

3 Publications

Overview

Quantity:	400 µL
Target:	ST14
Binding Specificity:	C-Term
Reactivity:	Human, Mouse
Host:	Rabbit
Clonality:	Polyclonal
Conjugate:	This ST14 antibody is un-conjugated
Application:	Western Blotting (WB), ELISA

Product Details

Purpose:	Rabbit polyclonal antibody raised against synthetic peptide of ST14.
Immunogen:	A synthetic peptide (conjugated with KLH) corresponding to C-terminus of human ST14.
Cross-Reactivity:	Human, Mouse

Target Details

Target:	ST14
Alternative Name:	ST14 (ST14 Products)
Gene ID:	6768

Application Details

Application Notes:	ELISA (1:1000) Western Blot (1:100-500) The optimal working dilution should be determined by the end user.
--------------------	--

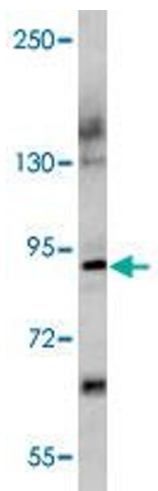
Restrictions:	For Research Use only
---------------	-----------------------

Handling

Format:	Liquid
Buffer:	In PBS (0.09 % sodium azide)
Preservative:	Sodium azide
Precaution of Use:	This product contains Sodium azide: a POISONOUS AND HAZARDOUS SUBSTANCE which should be handled by trained staff only.
Storage:	4 °C,-20 °C
Storage Comment:	Store at 4°C. For long term storage store at -20°C. Aliquot to avoid repeated freezing and thawing.

Publications

Product cited in:	<p>Oberst, Williams, Dickson, Johnson, Lin: "The activation of matriptase requires its noncatalytic domains, serine protease domain, and its cognate inhibitor." in: The Journal of biological chemistry, Vol. 278, Issue 29, pp. 26773-9, (2003) (PubMed).</p> <p>Santin, Cane, Bellone, Bignotti, Palmieri, De Las Casas, Anfossi, Roman, OBrien, Pecorelli: "The novel serine protease tumor-associated differentially expressed gene-15 (matriptase/MT-SP1) is highly overexpressed in cervical carcinoma." in: Cancer, Vol. 98, Issue 9, pp. 1898-904, (2003) (PubMed).</p> <p>Ihara, Miyoshi, Ko, Murata, Nakahara, Honke, Dickson, Lin, Taniguchi: "Prometastatic effect of N-acetylglucosaminyltransferase V is due to modification and stabilization of active matriptase by adding beta 1-6 GlcNAc branching." in: The Journal of biological chemistry, Vol. 277, Issue 19, pp. 16960-7, (2002) (PubMed).</p>
-------------------	--



Western Blotting

Image 1. Western blot analysis of mouse liver tissue lysate (35 ug/lane) with ST14 polyclonal antibody .