

Datasheet for ABIN545767  
**anti-PDGFD antibody (AA 313-341)**[Go to Product page](#)

## 4 Images

## Overview

Quantity:	400 µL
Target:	PDGFD
Binding Specificity:	AA 313-341
Reactivity:	Human, Mouse, Rat
Host:	Rabbit
Clonality:	Polyclonal
Conjugate:	This PDGFD antibody is un-conjugated
Application:	Western Blotting (WB), ELISA, Immunohistochemistry (Paraffin-embedded Sections) (IHC (p))

## Product Details

Purpose:	Rabbit polyclonal antibody raised against synthetic peptide of rat Pdgfd.
Immunogen:	A synthetic peptide (conjugated with KLH) corresponding to amino acids 313-341 of rat Pdgfd.
Cross-Reactivity:	Human, Mouse, Rat

## Target Details

Target:	PDGFD
Alternative Name:	PDGFD ( <a href="#">PDGFD Products</a> )
Gene ID:	66018
Pathways:	<a href="#">RTK Signaling</a> , <a href="#">Platelet-derived growth Factor Receptor Signaling</a>

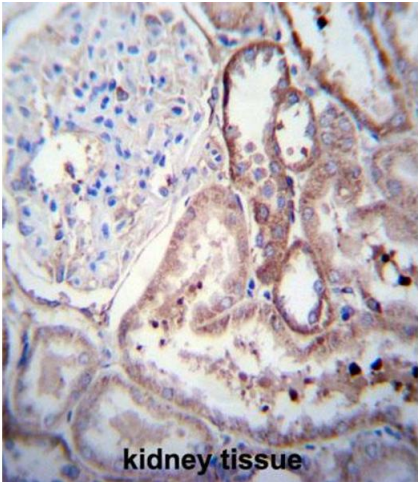
## Application Details

Application Notes:	ELISA Immunohistochemistry (Formalin/PFA-fixed paraffin-embedded sections) (1:10-1:50) Western Blot (1:1000) The optimal working dilution should be determined by the end user.
Restrictions:	For Research Use only

## Handling

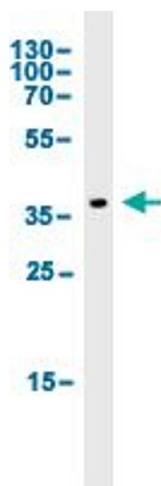
Format:	Liquid
Buffer:	In PBS (0.09 % sodium azide)
Preservative:	Sodium azide
Precaution of Use:	This product contains Sodium azide: a POISONOUS AND HAZARDOUS SUBSTANCE which should be handled by trained staff only.
Storage:	4 °C, -20 °C
Storage Comment:	Store at 4°C. For long term storage store at -20°C. Aliquot to avoid repeated freezing and thawing.

## Images



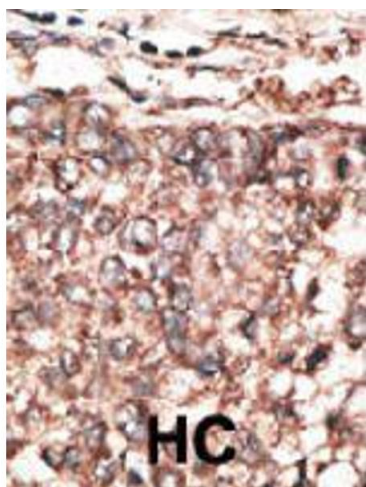
**Immunohistochemistry**

**Image 1.** Immunohistochemical staining (Formalin-fixed paraffin-embedded sections) of human kidney tissue.



#### Western Blotting

**Image 2.** Western Blot analysis of rat kidney tissue lysate.



#### Immunohistochemistry

**Image 3.** Immunohistochemical staining (Formalin-fixed paraffin-embedded sections) of human hepatocarcinoma.

Please check the [product details page](#) for more images. Overall 4 images are available for ABIN545767.