

Datasheet for ABIN545782  
**anti-TOB2 antibody (N-Term)**[Go to Product page](#)[2 Images](#)[3 Publications](#)

## Overview

Quantity:	400 µL
Target:	TOB2
Binding Specificity:	N-Term
Reactivity:	Human
Host:	Rabbit
Clonality:	Polyclonal
Conjugate:	This TOB2 antibody is un-conjugated
Application:	Western Blotting (WB), ELISA, Immunohistochemistry (Paraffin-embedded Sections) (IHC (p))

## Product Details

Purpose:	Rabbit polyclonal antibody raised against synthetic peptide of TOB2.
Immunogen:	A synthetic peptide (conjugated with KLH) corresponding to N-terminus of human TOB2.
Cross-Reactivity:	Human

## Target Details

Target:	TOB2
Alternative Name:	TOB2 ( <a href="#">TOB2 Products</a> )
Gene ID:	10766
Pathways:	<a href="#">Nuclear Hormone Receptor Binding</a>

## Application Details

Application Notes:	ELISA (1:1000) Western Blot (1:50-100) Immunohistochemistry (1:50) The optimal working dilution should be determined by the end user.
--------------------	--

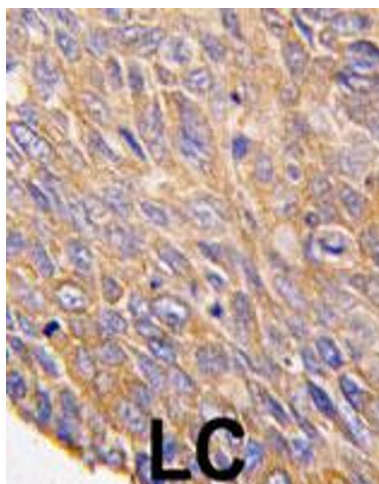
Restrictions:	For Research Use only
---------------	-----------------------

## Handling

Format:	Liquid
Buffer:	In PBS (0.09 % sodium azide)
Preservative:	Sodium azide
Precaution of Use:	This product contains Sodium azide: a POISONOUS AND HAZARDOUS SUBSTANCE which should be handled by trained staff only.
Storage:	4 °C, -20 °C
Storage Comment:	Store at 4°C. For long term storage store at -20°C. Aliquot to avoid repeated freezing and thawing.

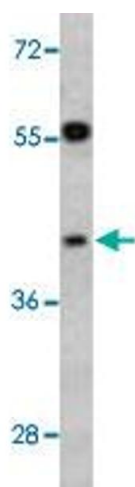
## Publications

Product cited in:	Sasajima, Nakagawa, Yokosawa: "Antiproliferative proteins of the BTG/Tob family are degraded by the ubiquitin-proteasome system." in: <b>European journal of biochemistry / FEBS</b> , Vol. 269, Issue 14, pp. 3596-604, (2002) ( <a href="#">PubMed</a> ).  Suzuki, Matsuda, Tsuzuku, Yoshida, Yamamoto: "A serine/threonine kinase p90rsk1 phosphorylates the anti-proliferative protein Tob." in: <b>Genes to cells : devoted to molecular &amp; cellular mechanisms</b> , Vol. 6, Issue 2, pp. 131-8, (2001) ( <a href="#">PubMed</a> ).  Yoshida, Hosoda, Nakamura, Yamamoto: "Association of ANA, a member of the antiproliferative Tob family proteins, with a Caf1 component of the CCR4 transcriptional regulatory complex." in: <b>Japanese journal of cancer research : Gann</b> , Vol. 92, Issue 6, pp. 592-6, (2001) ( <a href="#">PubMed</a> ).
-------------------	---



#### Immunohistochemistry

**Image 1.** Formalin-fixed and paraffin-embedded human lung carcinoma tissue reacted with TOB2 polyclonal antibody , which was peroxidase-conjugated to the secondary antibody, followed by DAB staining. This data demonstrates the use of this antibody for immunohistochemistry ; clinical relevance has not been evaluated.



#### Western Blotting

**Image 2.** Western blot analysis of HepG2 cell lysate (35 ug/lane) with TOB2 polyclonal antibody .