



[Go to Product page](#)

Datasheet for ABIN545784  
**anti-HES1 antibody (N-Term)**

1 Image

2 Publications

### Overview

Quantity:	400 µL
Target:	HES1
Binding Specificity:	N-Term
Reactivity:	Human
Host:	Rabbit
Clonality:	Polyclonal
Conjugate:	This HES1 antibody is un-conjugated
Application:	Western Blotting (WB), ELISA

### Product Details

Purpose:	Rabbit polyclonal antibody raised against synthetic peptide of HES1.
Immunogen:	A synthetic peptide (conjugated with KLH) corresponding to N-terminus of human HES1.
Cross-Reactivity:	Human

### Target Details

Target:	HES1
Alternative Name:	HES1 ( <a href="#">HES1 Products</a> )
Gene ID:	3280
Pathways:	<a href="#">DNA Damage Repair</a>

## Application Details

---

Application Notes: ELISA (1:1000)  
Western Blot (1:50-100)  
The optimal working dilution should be determined by the end user.

---

Restrictions: For Research Use only

---

## Handling

---

Format: Liquid

---

Buffer: In PBS (0.09 % sodium azide)

---

Preservative: Sodium azide

---

Precaution of Use: This product contains Sodium azide: a POISONOUS AND HAZARDOUS SUBSTANCE which should be handled by trained staff only.

---

Storage: 4 °C,-20 °C

---

Storage Comment: Store at 4°C. For long term storage store at -20°C.  
Aliquot to avoid repeated freezing and thawing.

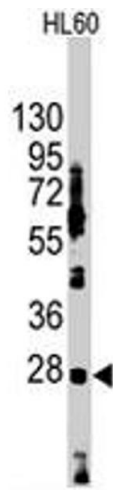
---

## Publications

---

Product cited in: Karlsson, Brantsing, Svensson, Brisby, Asp, Tallheden, Lindahl: "Differentiation of human mesenchymal stem cells and articular chondrocytes: analysis of chondrogenic potential and expression pattern of differentiation-related transcription factors." in: **Journal of orthopaedic research : official publication of the Orthopaedic Research Society**, Vol. 25, Issue 2, pp. 152-63, (2007) ([PubMed](#)).

Liu, Ye, Chen, Lü, Zhou, Xie: "Expression of differentiation associated protein Hes1 and Hes5 in cervical squamous carcinoma and its precursors." in: **International journal of gynecological cancer : official journal of the International Gynecological Cancer Society**, Vol. 17, Issue 6, pp. 1293-9, (2007) ([PubMed](#)).



### Western Blotting

**Image 1.** Western blot analysis of HES1 polyclonal antibody in HL-60 cell lysate (35 ug/lane). HES1 (arrow) was detected using the purified polyclonal antibody (1 : 60 dilution).