



Datasheet for ABIN545807  
**anti-YBX1 antibody (C-Term)**



[Go to Product page](#)

1 Image

3 Publications

### Overview

Quantity:	400 µL
Target:	YBX1
Binding Specificity:	C-Term
Reactivity:	Human
Host:	Rabbit
Clonality:	Polyclonal
Conjugate:	This YBX1 antibody is un-conjugated
Application:	Western Blotting (WB), ELISA

### Product Details

Purpose:	Rabbit polyclonal antibody raised against synthetic peptide of YBX1.
Immunogen:	A synthetic peptide (conjugated with KLH) corresponding to C-terminus of human YBX1.
Cross-Reactivity:	Human

### Target Details

Target:	YBX1
Alternative Name:	YBX1 ( <a href="#">YBX1 Products</a> )
Gene ID:	4904
Pathways:	<a href="#">Regulation of Muscle Cell Differentiation</a>

## Application Details

---

Application Notes: ELISA (1:1000)  
Western Blot (1:50-100)  
The optimal working dilution should be determined by the end user.

---

Restrictions: For Research Use only

---

## Handling

---

Format: Liquid

---

Buffer: In PBS (0.09 % sodium azide)

---

Preservative: Sodium azide

---

Precaution of Use: This product contains Sodium azide: a POISONOUS AND HAZARDOUS SUBSTANCE which should be handled by trained staff only.

---

Storage: 4 °C,-20 °C

---

Storage Comment: Store at 4°C. For long term storage store at -20°C.  
Aliquot to avoid repeated freezing and thawing.

---

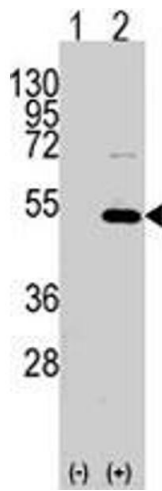
## Publications

---

Product cited in: Fraser, Phillips, Zhang, van Roeyen, Muehlenberg, En-Nia, Mertens: "Y-box protein-1 controls transforming growth factor-beta1 translation in proximal tubular cells." in: **Kidney international**, Vol. 73, Issue 6, pp. 724-32, (2008) ([PubMed](#)).

Shiota, Izumi, Onitsuka, Miyamoto, Kashiwagi, Kidani, Yokomizo, Naito, Kohno: "Twist promotes tumor cell growth through YB-1 expression." in: **Cancer research**, Vol. 68, Issue 1, pp. 98-105, (2008) ([PubMed](#)).

Fujii, Kawahara, Basaki, Hattori, Nakashima, Nakano, Shirouzu, Kohno, Yanagawa, Yamana, Nishio, Ono, Kuwano, Kage: "Expression of HER2 and estrogen receptor alpha depends upon nuclear localization of Y-box binding protein-1 in human breast cancers." in: **Cancer research**, Vol. 68, Issue 5, pp. 1504-12, (2008) ([PubMed](#)).



### Western Blotting

**Image 1.** Western blot analysis of YBX1 (arrow) using rabbit YBX1 polyclonal antibody . 293 cell lysate (2 ug/lane) either nontransfected (Lane 1) or transiently transfected with the YBX1 gene (Lane 2) (Origene Technologies).