

Datasheet for ABIN545831
anti-SPPL2A antibody (N-Term)[2 Images](#)[1 Publication](#)[Go to Product page](#)

Overview

Quantity:	400 µL
Target:	SPPL2A
Binding Specificity:	N-Term
Reactivity:	Human
Host:	Rabbit
Clonality:	Polyclonal
Conjugate:	This SPPL2A antibody is un-conjugated
Application:	ELISA, Western Blotting (WB), Immunohistochemistry (Paraffin-embedded Sections) (IHC (p))

Product Details

Purpose:	Rabbit polyclonal antibody raised against synthetic peptide of SPPL2A.
Immunogen:	A synthetic peptide (conjugated with KLH) corresponding to N-terminus of human SPPL2A.
Cross-Reactivity:	Human

Target Details

Target:	SPPL2A
Alternative Name:	SPPL2A (SPPL2A Products)
Gene ID:	84888

Application Details

Application Notes:	ELISA (1:1000) Western Blot (1:100-500) Immunohistochemistry (1:10-50) The optimal working dilution should be determined by the end user.
--------------------	--

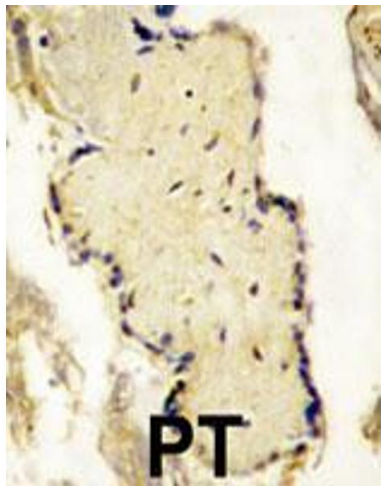
Restrictions:	For Research Use only
---------------	-----------------------

Handling

Format:	Liquid
Buffer:	In PBS (0.09 % sodium azide)
Preservative:	Sodium azide
Precaution of Use:	This product contains Sodium azide: a POISONOUS AND HAZARDOUS SUBSTANCE which should be handled by trained staff only.
Storage:	4 °C, -20 °C
Storage Comment:	Store at 4°C. For long term storage store at -20°C. Aliquot to avoid repeated freezing and thawing.

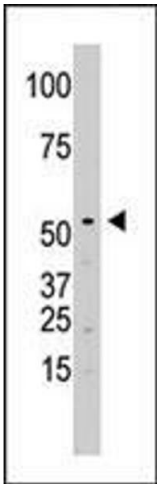
Publications

Product cited in:	Grigorenko, Moliaka, Korovaitseva, Rogaev: "Novel class of polytopic proteins with domains associated with putative protease activity." in: Biochemistry. Biokhimiia , Vol. 67, Issue 7, pp. 826-35, (2002) (PubMed).
-------------------	--



Immunohistochemistry

Image 1. Formalin-fixed and paraffin-embedded placenta tissue reacted with SPPL2A polyclonal antibody , which was peroxidase-conjugated to the secondary antibody, followed by DAB staining. This data demonstrates the use of this antibody for immunohistochemistry ; clinical relevance has not been evaluated.



Western Blotting

Image 2. The SPPL2A polyclonal antibody is used in Western blot to detect SPPL2A in Jurkat cell lysate.