



[Go to Product page](#)

Datasheet for ABIN546597
anti-BSX antibody (N-Term)

1 Image

Overview

Quantity:	100 µg
Target:	BSX
Binding Specificity:	N-Term
Reactivity:	Mouse
Host:	Rabbit
Clonality:	Polyclonal
Conjugate:	This BSX antibody is un-conjugated
Application:	Western Blotting (WB), ELISA, Immunohistochemistry (Paraffin-embedded Sections) (IHC (p))

Product Details

Purpose:	Rabbit polyclonal antibody raised against synthetic peptide of Bsx.
Immunogen:	A synthetic peptide corresponding to N-terminus of mouse Bsx.
Cross-Reactivity:	Mouse
Characteristics:	Antibody Reactive Against Synthetic Peptide.

Target Details

Target:	BSX
Alternative Name:	BSX (BSX Products)
Gene ID:	244813
Pathways:	Feeding Behaviour

Application Details

Application Notes: The optimal working dilution should be determined by the end user.

Restrictions: For Research Use only

Handling

Format: Liquid

Buffer: In PBS, pH 7.2 (50 % glycerol, 0.01 % sodium azide)

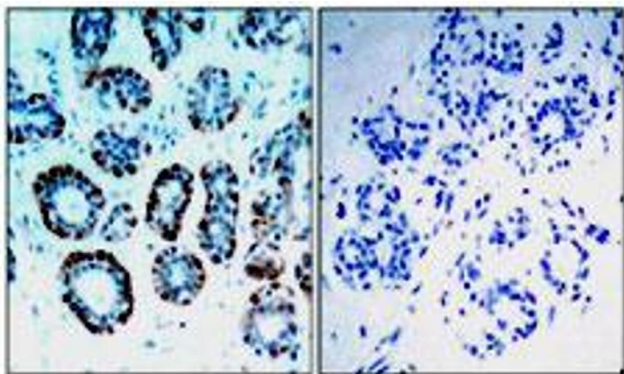
Preservative: Sodium azide

Precaution of Use: This product contains Sodium azide: a POISONOUS AND HAZARDOUS SUBSTANCE which should be handled by trained staff only.

Storage: -20 °C

Storage Comment: Store at -20°C.
Aliquot to avoid repeated freezing and thawing.

Images



Peptide

Immunohistochemistry

Image 1. Immunohistochemical analysis of paraffin-embedded human breast carcinoma tissue, using Bsx polyclonal antibody .