

Datasheet for ABIN548346  
**anti-MYL12A antibody (pSer18)**[Go to Product page](#)

## 1 Image

## Overview

Quantity:	100 µg
Target:	MYL12A
Binding Specificity:	pSer18
Reactivity:	Human, Mouse, Rat
Host:	Rabbit
Clonality:	Polyclonal
Conjugate:	This MYL12A antibody is un-conjugated
Application:	Western Blotting (WB), Immunohistochemistry (Paraffin-embedded Sections) (IHC (p))

## Product Details

Purpose:	Rabbit polyclonal antibody raised against synthetic phosphopeptide of MYL12A.
Immunogen:	Synthetic phosphopeptide corresponding to residues surrounding S19 of human MYL12A.
Sequence:	RPQRAT <b>S</b> NVFAMF
Cross-Reactivity:	Human, Mouse, Rat

## Target Details

Target:	MYL12A
Alternative Name:	MYL12A ( <a href="#">MYL12A Products</a> )
Gene ID:	10627

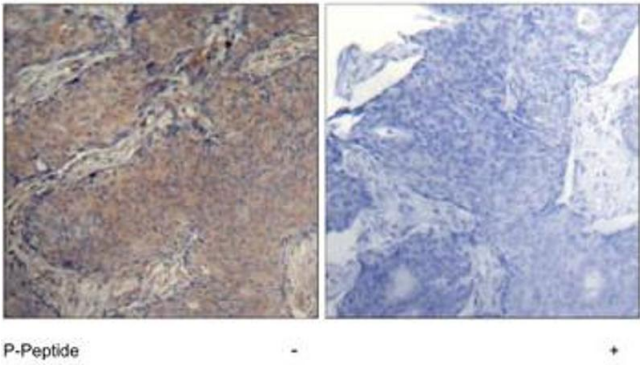
## Application Details

Application Notes:	Immunohistochemistry (1:50-1:100) Western Blot (1:500-1:1000) The optimal working dilution should be determined by the end user.
Restrictions:	For Research Use only

## Handling

Format:	Liquid
Concentration:	1 mg/mL
Buffer:	In PBS (without $Mg^{2+}$ and $Ca^{2+}$ ), 150 mM NaCl, pH 7.4 (50 % glycerol, 0.02 % sodium azide).
Preservative:	Sodium azide
Precaution of Use:	This product contains Sodium azide: a POISONOUS AND HAZARDOUS SUBSTANCE which should be handled by trained staff only.
Storage:	4 °C, -20 °C
Storage Comment:	Store at 4°C for short term. For long term storage, store at -20°C. Aliquot to avoid repeated freezing and thawing.

## Images



### Immunohistochemistry

**Image 1.** Immunohistochemical analysis of paraffin-embedded human breast carcinoma tissue, using MYL2 (phospho S19) polyclonal antibody .