

Datasheet for ABIN548431
anti-PAK6 antibody (N-Term)[Go to Product page](#)**1** Image**3** Publications

Overview

Quantity:	100 µL
Target:	PAK6
Binding Specificity:	N-Term
Reactivity:	Human
Host:	Rabbit
Clonality:	Polyclonal
Application:	Western Blotting (WB), ELISA

Product Details

Purpose:	Rabbit polyclonal antibody raised against synthetic peptide of PAK6.
Immunogen:	A synthetic peptide corresponding to N-terminus of human PAK6.
Specificity:	The sequence used has two amino acid differences compared to rat and mouse PAK6.
Cross-Reactivity:	Human
Characteristics:	Antibody Reactive Against Synthetic Peptide.

Target Details

Target:	PAK6
Alternative Name:	PAK6 (PAK6 Products)
Gene ID:	56924

Application Details

Application Notes:	ELISA (1:2000) Western Blot (1:500) The optimal working dilution should be determined by the end user.
--------------------	--

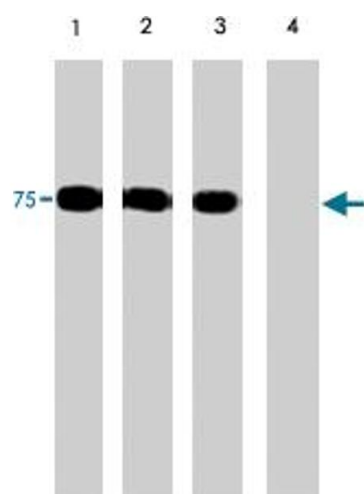
Restrictions:	For Research Use only
---------------	-----------------------

Handling

Format:	Liquid
Buffer:	In PBS (50 % glycerol, 1 mg/mL BSA, 0.05 % sodium azide)
Preservative:	Sodium azide
Precaution of Use:	This product contains Sodium azide: a POISONOUS AND HAZARDOUS SUBSTANCE which should be handled by trained staff only.
Storage:	-20 °C
Storage Comment:	Store at -20°C. Aliquot to avoid repeated freezing and thawing.

Publications

Product cited in:	Kaur, Liu, Gjoerup, Zhang, Yuan, Balk, Schneider, Lu: "Activation of p21-activated kinase 6 by MAP kinase kinase 6 and p38 MAP kinase." in: The Journal of biological chemistry , Vol. 280, Issue 5, pp. 3323-30, (2005) (PubMed).
	Schrantz, da Silva Correia, Fowler, Ge, Sun, Bokoch: "Mechanism of p21-activated kinase 6-mediated inhibition of androgen receptor signaling." in: The Journal of biological chemistry , Vol. 279, Issue 3, pp. 1922-31, (2004) (PubMed).
	Lee, Ramos, Ko, Masiello, Swanson, Lu, Balk: "AR and ER interaction with a p21-activated kinase (PAK6)." in: Molecular endocrinology (Baltimore, Md.) , Vol. 16, Issue 1, pp. 85-99, (2002) (PubMed).



Western Blotting

Image 1. Western blots of human PAK6 recombinant protein phosphorylated by ERK2. The blot was exposed to lambda phosphatase (lane 2) then probed with PAK6 polyclonal antibody . The PAK6 antibody was used in the presence of a non-specific peptide (lane 3) or PAK6 (N-terminal) peptide (lane 4).