

Datasheet for ABIN548434

anti-Neural Wiskott-Aldrich syndrome protein (WASL) (N-Term) antibody[Go to Product page](#)

1 Image

2 Publications

Overview

Quantity:	100 µL
Target:	Neural Wiskott-Aldrich syndrome protein (WASL)
Binding Specificity:	N-Term
Reactivity:	Human, Mouse, Rat
Host:	Rabbit
Clonality:	Polyclonal
Conjugate:	Un-conjugated
Application:	Western Blotting (WB), ELISA

Product Details

Purpose:	Rabbit polyclonal antibody raised against synthetic peptide of WASL.
Immunogen:	A synthetic peptide (conjugated with KLH) corresponding to N-terminus of human WASL.
Specificity:	This N-WASP peptide sequence is 100 % homologous to rat and mouse N-WASP, and has low homology to the corresponding region in the human WASP.
Cross-Reactivity:	Human, Mouse, Rat
Characteristics:	Antibody Reactive Against Synthetic Peptide.

Target Details

Target:	Neural Wiskott-Aldrich syndrome protein (WASL)
Alternative Name:	WASL / N-WASP (WASL Products)

Target Details

Gene ID: 8976

Application Details

Application Notes: ELISA (1:2000)
Western Blot (1:500)
The optimal working dilution should be determined by the end user.

Restrictions: For Research Use only

Handling

Format: Liquid

Buffer: In PBS (50 % glycerol, 1 mg/mL BSA, 0.05 % sodium azide)

Preservative: Sodium azide

Precaution of Use: This product contains Sodium azide: a POISONOUS AND HAZARDOUS SUBSTANCE which should be handled by trained staff only.

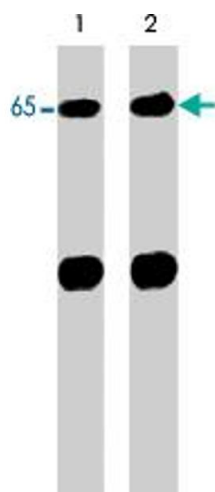
Storage: -20 °C

Storage Comment: Store at -20°C.
Aliquot to avoid repeated freezing and thawing.

Publications

Product cited in: Cory, Cramer, Blanchoin, Ridley: "Phosphorylation of the WASP-VCA domain increases its affinity for the Arp2/3 complex and enhances actin polymerization by WASP." in: **Molecular cell**, Vol. 11, Issue 5, pp. 1229-39, (2003) ([PubMed](#)).

Higgs, Pollard: "Regulation of actin filament network formation through ARP2/3 complex: activation by a diverse array of proteins." in: **Annual review of biochemistry**, Vol. 70, pp. 649-76, (2002) ([PubMed](#)).



Western Blotting

Image 1. Western blot analysis of control (lane 1) and alkaline phosphatase-treated (AP) (lane 2) neonatal rat brain lysate (20 ug/lane). Blots were probed with WASL polyclonal antibody .