



[Go to Product page](#)

Datasheet for ABIN548457

## anti-PKC alpha antibody (pSer657, pTyr658)

1 Image

1 Publication

### Overview

Quantity:	100 µL
Target:	PKC alpha (PKCa)
Binding Specificity:	pSer657, pTyr658
Reactivity:	Human, Rat, Rabbit
Host:	Rabbit
Clonality:	Polyclonal
Conjugate:	This PKC alpha antibody is un-conjugated
Application:	Western Blotting (WB), ELISA, Immunoprecipitation (IP)

### Product Details

Purpose:	Rabbit polyclonal antibody raised against synthetic phosphopeptide of PRKCA.
Immunogen:	Synthetic phosphopeptide (conjugated with KLH) corresponding to residues surrounding S657/Y658 of human PRKCA.
Specificity:	This sequence is similar to a dual phosphorylation site found in PKCβ1 (Ser-661/Tyr-662). These human sequences are highly conserved in rat and mouse PKCa and PKCβ1. In addition,
Cross-Reactivity:	Human, Rabbit, Rat
Characteristics:	Antibody Reactive Against Synthetic Peptide.

### Target Details

Target:	PKC alpha (PKCa)
---------	------------------

## Target Details

---

Alternative Name: PRKCA ([PKCa Products](#))

Gene ID: 5578

Pathways: [WNT Signaling](#), [TCR Signaling](#), [EGFR Signaling Pathway](#), [Neurotrophin Signaling Pathway](#), [Thyroid Hormone Synthesis](#), [cAMP Metabolic Process](#), [Myometrial Relaxation and Contraction](#), [Cell-Cell Junction Organization](#), [Regulation of G-Protein Coupled Receptor Protein Signaling](#), [G-protein mediated Events](#), [Signaling Events mediated by VEGFR1 and VEGFR2](#), [Interaction of EGFR with phospholipase C-gamma](#), [Thromboxane A2 Receptor Signaling](#), [VEGFR1 Specific Signals](#), [VEGF Signaling](#)

## Application Details

---

Application Notes: ELISA (1:2000)  
Immunoprecipitation (5-10 µL)  
Western Blot (1:1000)  
The optimal working dilution should be determined by the end user.

Restrictions: For Research Use only

## Handling

---

Format: Liquid

Buffer: In PBS (50 % glycerol, 1 mg/mL BSA, 0.05 % sodium azide)

Preservative: Sodium azide

Precaution of Use: This product contains Sodium azide: a POISONOUS AND HAZARDOUS SUBSTANCE which should be handled by trained staff only.

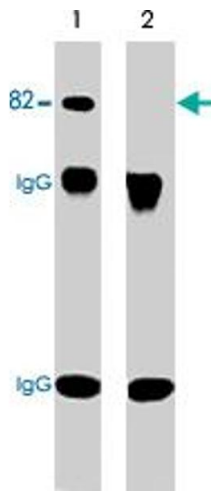
Storage: -20 °C

Storage Comment: Store at -20°C.  
Aliquot to avoid repeated freezing and thawing.

## Publications

---

Product cited in: Kawakami, Kitaura, Yao, McHenry, Kawakami, Newton, Kang, Kato, Leitges, Rawlings, Kawakami: "A Ras activation pathway dependent on Syk phosphorylation of protein kinase C." in: **Proceedings of the National Academy of Sciences of the United States of America**, Vol. 100, Issue 16, pp. 9470-5, (2003) ([PubMed](#)).



### Western Blotting

**Image 1.** Western blot analysis of immunoprecipitates from neonatal rat brain lysate using anti-PRKCA antibody. Control (lane 1) and alkaline phosphatase treated (lane 2) precipitates were probed with PRKCA (phospho S657/Y658) polyclonal antibody. The latter shows no detection of PRKCA after phosphatase treatment.