



[Go to Product page](#)

Datasheet for ABIN548555  
**anti-SCG3 antibody (C-Term)**

2 Images

1 Publication

### Overview

Quantity:	100 µg
Target:	SCG3
Binding Specificity:	C-Term
Reactivity:	Human, Mouse, Rat
Host:	Rabbit
Clonality:	Polyclonal
Conjugate:	This SCG3 antibody is un-conjugated
Application:	Western Blotting (WB), Immunohistochemistry (Paraffin-embedded Sections) (IHC (p))

### Product Details

Purpose:	Rabbit polyclonal antibody raised against synthetic peptide of SCG3.
Immunogen:	A synthetic peptide corresponding to amino acids at C-terminus of human SCG3.
Isotype:	IgG
Cross-Reactivity:	Human, Mouse, Rat

### Target Details

Target:	SCG3
Alternative Name:	Secretogranin-3 (SCG3) ( <a href="#">SCG3 Products</a> )
Gene ID:	29106

## Application Details

---

Application Notes: Western Blot (1-2 µg/mL)  
Immunohistochemistry (Formalin/PFA-fixed paraffin-embedded sections) (0.5-1 µg/mL)  
The optimal working dilution should be determined by the end user.

Restrictions: For Research Use only

## Handling

---

Format: Lyophilized

Buffer: Lyophilized from 0.9 mg NaCl, 0.2 mg Na<sub>2</sub>HPO<sub>4</sub> (5 mg BSA, 0.05 mg sodium azide, 0.05 mg Thimerosal)

Preservative: Sodium azide, Thimerosal (Merthiolate)

Precaution of Use: This product contains Thimerosal (Merthiolate) and Sodium azide: POISONOUS AND HAZARDOUS SUBSTANCES which should be handled by trained staff only.

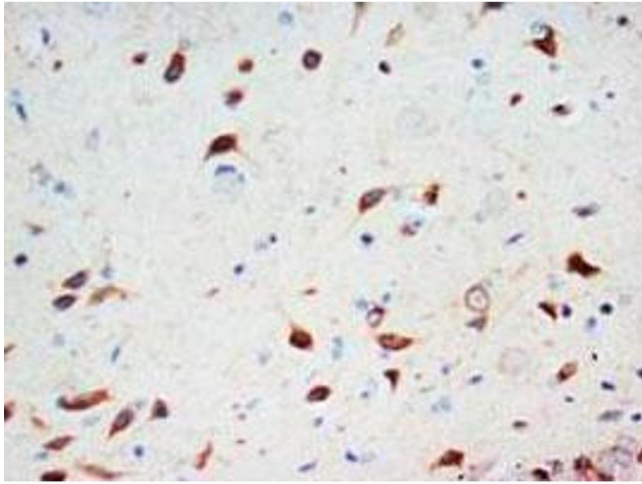
Storage: -20 °C

Storage Comment: Store at -20°C on dry atmosphere.  
After reconstitution with 200 µL of deionized water and concentration will be 500 µg/mL, store at -20°C or lower.  
Aliquot to avoid repeated freezing and thawing.

## Publications

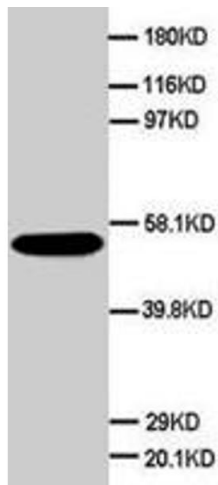
---

Product cited in: Tanabe, Yanagiya, Iida, Saito, Sekine, Takahashi, Nakamura, Tsunoda, Kamohara, Nakata, Kotani, Komatsu, Itoh, Mineo, Wada, Funahashi, Miyazaki, Tokunaga, Hamaguchi, Shimada, Tanaka, Yamada, Hanafusa et al.: "Functional single-nucleotide polymorphisms in the secretogranin III (SCG3) gene that form secretory granules with appetite-related neuropeptides are associated with obesity. ..." in: **The Journal of clinical endocrinology and metabolism**, Vol. 92, Issue 3, pp. 1145-54, (2007) ([PubMed](#)).



### Immunohistochemistry

**Image 1.** Immunohistochemical analysis of paraffin-embedded rat brain sections using SCG3 polyclonal antibody .



### Western Blotting

**Image 2.** Western blot analysis of HeLa cell lysate. Using SCG3 polyclonal antibody .