



Datasheet for ABIN548691
anti-LC3B antibody (pThr12)



[Go to Product page](#)

1 Image

3 Publications

Overview

Quantity:	400 µL
Target:	LC3B (MAP1LC3B)
Binding Specificity:	pThr12
Reactivity:	Human
Host:	Rabbit
Clonality:	Polyclonal
Conjugate:	This LC3B antibody is un-conjugated
Application:	ELISA, Dot Blot (DB)

Product Details

Purpose:	Rabbit polyclonal antibody raised against synthetic phosphopeptide of MAP1LC3B.
Immunogen:	Synthetic phosphopeptide (conjugated with KLH) corresponding to residues surrounding T12 of human MAP1LC3B.
Cross-Reactivity:	Human

Target Details

Target:	LC3B (MAP1LC3B)
Alternative Name:	LC3B (MAP1LC3B Products)
Gene ID:	81631
Pathways:	Autophagy

Application Details

Application Notes: ELISA (1:1000)
Dot Blot (1:500)
The optimal working dilution should be determined by the end user.

Restrictions: For Research Use only

Handling

Format: Liquid

Buffer: In PBS (0.09 % sodium azide)

Preservative: Sodium azide

Precaution of Use: This product contains Sodium azide: a POISONOUS AND HAZARDOUS SUBSTANCE which should be handled by trained staff only.

Storage: 4 °C,-20 °C

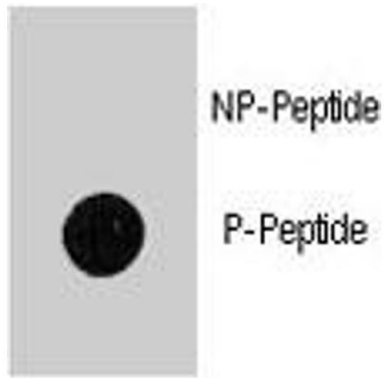
Storage Comment: Store at 4°C. For long term storage store at -20°C.
Aliquot to avoid repeated freezing and thawing.

Publications

Product cited in: Lum, DeBerardinis, Thompson: "Autophagy in metazoans: cell survival in the land of plenty." in: **Nature reviews. Molecular cell biology**, Vol. 6, Issue 6, pp. 439-48, (2005) ([PubMed](#)).

Baehrecke: "Autophagy: dual roles in life and death?" in: **Nature reviews. Molecular cell biology**, Vol. 6, Issue 6, pp. 505-10, (2005) ([PubMed](#)).

Greenberg: "Degrade or die: a dual function for autophagy in the plant immune response." in: **Developmental cell**, Vol. 8, Issue 6, pp. 799-801, (2005) ([PubMed](#)).



Dot Blot

Dot Blot

Image 1. Dot blot analysis of MAP1LC3B (phospho T12) polyclonal antibody on nitrocellulose membrane. 50 ng of Phospho-peptide or Non Phospho-peptide per dot were adsorbed. Antibody working concentrations are 0.5 ug/mL.