

Datasheet for ABIN549050

**anti-KRT12 antibody**[Go to Product page](#)**1** Image**1** Publication

## Overview

Quantity:	25 µg
Target:	KRT12
Reactivity:	Human, Mouse, Rabbit
Host:	Rabbit
Clonality:	Polyclonal
Conjugate:	This KRT12 antibody is un-conjugated
Application:	Immunohistochemistry (IHC), Immunofluorescence (IF)

## Product Details

Purpose:	Rabbit polyclonal antibody raised against synthetic peptide of keratin 12.
Immunogen:	A synthetic peptide corresponding to rabbit keratin 12.
Isotype:	IgG
Cross-Reactivity:	Human, Mouse, Rabbit
Characteristics:	Antibody Reactive Against Synthetic Peptide.

## Target Details

Target:	KRT12
Alternative Name:	Cytokeratin 12 ( <a href="#">KRT12 Products</a> )



## Application Details

Application Notes:	Immunohistochemistry (2 µg/mL) The optimal working dilution should be determined by the end user.
Restrictions:	For Research Use only

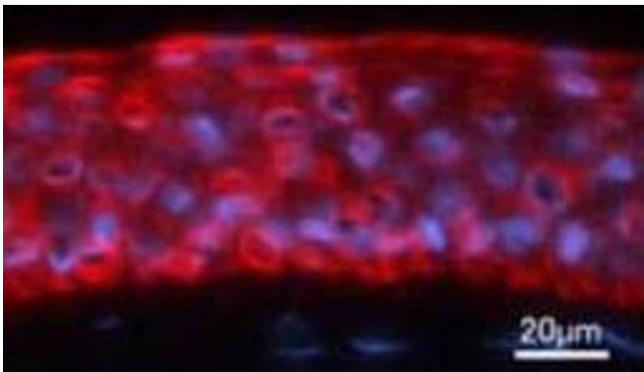
## Handling

Format:	Liquid
Buffer:	In PBS (0.1 % proclin, 2.0 % Block Ace)
Preservative:	ProClin
Precaution of Use:	This product contains ProClin: a POISONOUS AND HAZARDOUS SUBSTANCE which should be handled by trained staff only.
Storage:	-20 °C
Storage Comment:	Store at -20°C. Aliquot to avoid repeated freezing and thawing.

## Publications

Product cited in:	Kinoshita, Adachi, Sotozono, Nishida, Yokoi, Quantock, Okubo: "Characteristics of the human ocular surface epithelium." in: <b>Progress in retinal and eye research</b> , Vol. 20, Issue 5, pp. 639-73, (2001) ( <a href="#">PubMed</a> ).
-------------------	--

## Images



### Immunofluorescence

**Image 1.** Immunofluorescence analysis of human cornea tissue, using Keratin 12 polyclonal antibody .