

Datasheet for ABIN549473  
**anti-CXCR1 antibody (AA 13-30)**[Go to Product page](#)

1 Image

3 Publications

## Overview

|                      |                                                                             |
|----------------------|-----------------------------------------------------------------------------|
| Quantity:            | 100 µg                                                                      |
| Target:              | CXCR1                                                                       |
| Binding Specificity: | AA 13-30                                                                    |
| Reactivity:          | Human                                                                       |
| Host:                | Rabbit                                                                      |
| Clonality:           | Polyclonal                                                                  |
| Conjugate:           | This CXCR1 antibody is un-conjugated                                        |
| Application:         | Western Blotting (WB), Immunohistochemistry (IHC), Immunoprecipitation (IP) |

## Product Details

|                   |                                                                        |
|-------------------|------------------------------------------------------------------------|
| Purpose:          | Rabbit polyclonal antibody raised against synthetic peptide of CXCR1.  |
| Immunogen:        | A synthetic peptide corresponding to amino acids 13-30 of human CXCR1. |
| Sequence:         | DDLNFTGNPP ADEDYSPC                                                    |
| Cross-Reactivity: | Human                                                                  |
| Characteristics:  | Antibody Reactive Against Synthetic Peptide.                           |

## Target Details

|                   |                                                  |
|-------------------|--------------------------------------------------|
| Target:           | CXCR1                                            |
| Alternative Name: | CD181 / IL8RA ( <a href="#">CXCR1 Products</a> ) |
| Gene ID:          | 3577                                             |

## Target Details

Pathways: [cAMP Metabolic Process](#)

## Application Details

Application Notes: Western Blot (1:500)  
Immunoprecipitation (1:250)  
The optimal working dilution should be determined by the end user.

Restrictions: For Research Use only

## Handling

Format: Liquid

Buffer: In buffer containing 0.02 % sodium azide

Preservative: Sodium azide

Precaution of Use: This product contains Sodium azide: a POISONOUS AND HAZARDOUS SUBSTANCE which should be handled by trained staff only.

Storage: -20 °C

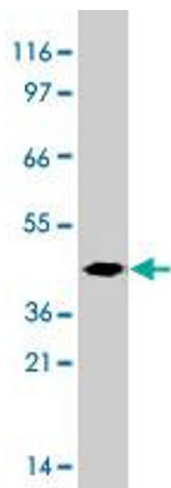
Storage Comment: Store at -20°C.  
Aliquot to avoid repeated freezing and thawing.

## Publications

Product cited in: Segerer: "The role of chemokines and chemokine receptors in progressive renal diseases." in: **American journal of kidney diseases : the official journal of the National Kidney Foundation**, Vol. 41, Issue 3 Suppl 1, pp. S15-8, (2003) ([PubMed](#)).

Ramjeesingh, Leung, Siu: "Interleukin-8 secreted by endothelial cells induces chemotaxis of melanoma cells through the chemokine receptor CXCR1." in: **FASEB journal : official publication of the Federation of American Societies for Experimental Biology**, Vol. 17, Issue 10, pp. 1292-4, (2003) ([PubMed](#)).

Tran, Miller: "Chemokine receptors: signposts to brain development and disease." in: **Nature reviews. Neuroscience**, Vol. 4, Issue 6, pp. 444-55, (2003) ([PubMed](#)).



Western Blotting

**Image 1.** Western blot of CXCR1 polyclonal antibody with protein-coupled CXCR1. Antibody dilution at 1:500.